

ZNF638 Antibody

Catalog No: #33886

Package Size: #33886-1 50ul #33886-2 100ul

Orders: order@signalwayantibody.comSupport: tech@signalwayantibody.com

Description

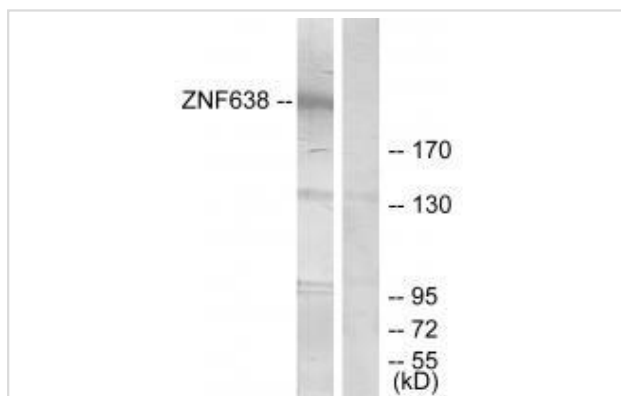
Product Name	ZNF638 Antibody
Host Species	Rabbit
Clonality	Polyclonal
Purification	The antibody was affinity-purified from rabbit antiserum by affinity-chromatography using epitope-specific immunogen.
Applications	WB IHC
Species Reactivity	Hu
Specificity	The antibody detects endogenous levels of total ZNF638 protein.
Immunogen Type	Peptide
Immunogen Description	Synthesized peptide derived from internal of human ZNF638.
Target Name	ZNF638
Other Names	Zinc finger protein 638; Nuclear protein 220; Zinc finger matrin-like protein; Cutaneous T-cell lymphoma-associated antigen se33-1; CTCL tumor antigen se33-1
Accession No.	Swiss-Prot: Q14966NCBI Gene ID: 27332
SDS-PAGE MW	220kd
Concentration	1.0mg/ml
Formulation	Rabbit IgG in phosphate buffered saline (without Mg ²⁺ and Ca ²⁺), pH 7.4, 150mM NaCl, 0.02% sodium azide and 50% glycerol.
Storage	Store at -20°C

Application Details

Western blotting: 1:500~1:3000

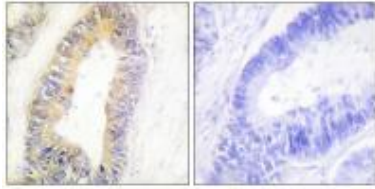
Immunohistochemistry: 1:50~1:100

Images



Western blot analysis of extracts from HepG2 cells, treated with serum (20%, 15mins), using ZNF638 antibody #33886.

Immunohistochemistry analysis of paraffin-embedded human colon carcinoma tissue using ZNF638 antibody #33886.



Background

Early regulator of adipogenesis that works as a transcription cofactor of CEBPs, controlling the expression of PPARG and probably of other proadipogenic genes, such as SREBF1 By similarity. Binds to cytidine clusters in double-stranded DNA.

Inagaki H., J. Biol. Chem. 271:12525-12531(1996).

Eichmueller S., Proc. Natl. Acad. Sci. U.S.A. 98:629-634(2001).

Hillier L.W., Nature 434:724-731(2005).

Note: This product is for in vitro research use only and is not intended for use in humans or animals.