

ZNF688 Antibody

Catalog No: #33996

Package Size: #33996-1 50ul #33996-2 100ul

Orders: order@signalwayantibody.comSupport: tech@signalwayantibody.com

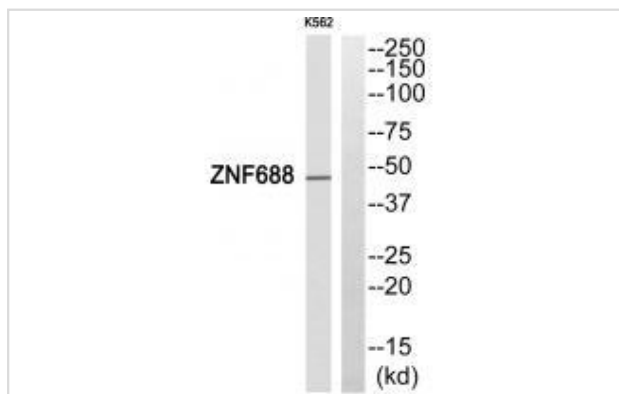
Description

Product Name	ZNF688 Antibody
Host Species	Rabbit
Clonality	Polyclonal
Purification	The antibody was affinity-purified from rabbit antiserum by affinity-chromatography using epitope-specific immunogen.
Applications	WB
Species Reactivity	Hu
Specificity	The antibody detects endogenous levels of total ZNF688 protein.
Immunogen Type	Peptide
Immunogen Description	Synthesized peptide derived from internal of human ZNF688.
Target Name	ZNF688
Other Names	Zinc finger protein 688; ZNF688; ZN688;
Accession No.	Swiss-Prot: Q8WV14NCBI Gene ID: 146540
SDS-PAGE MW	87kd
Concentration	1.0mg/ml
Formulation	Rabbit IgG in phosphate buffered saline (without Mg ²⁺ and Ca ²⁺), pH 7.4, 150mM NaCl, 0.02% sodium azide and 50% glycerol.
Storage	Store at -20°C

Application Details

Western blotting: 1:500~1:3000

Images



Western blot analysis of extracts from HepG2 cells, using ZNF688 antibody #33996.

Background

May be involved in transcriptional regulation.

Ota T., Nat. Genet. 36:40-45(2004).

Loftus B.J., Genomics 60:295-308(1999).

The MGC Project Team, Genome Res. 14:2121-2127(2004).

Note: This product is for in vitro research use only and is not intended for use in humans or animals.