

# JKIP2 Antibody

Catalog No: #34023

Package Size: #34023-1 50ul #34023-2 100ul

Orders: [order@signalwayantibody.com](mailto:order@signalwayantibody.com)Support: [tech@signalwayantibody.com](mailto:tech@signalwayantibody.com)

## Description

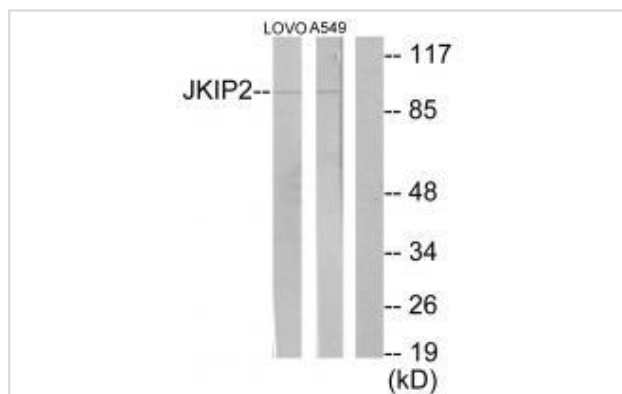
Product Name	JKIP2 Antibody
Host Species	Rabbit
Clonality	Polyclonal
Purification	The antibody was affinity-purified from rabbit antiserum by affinity-chromatography using epitope-specific immunogen.
Applications	WB IHC
Species Reactivity	Hu
Specificity	The antibody detects endogenous levels of total JKIP2 protein.
Immunogen Type	Peptide
Immunogen Description	Synthesized peptide derived from C-terminal of human Stathmin.
Target Name	JKIP2
Other Names	Janus kinase and microtubule-interacting protein 2; Jamip2; Neuroendocrine long coiled-coil protein 1; CTCL tumor antigen HD-CL-04; JAKMIP2
Accession No.	Swiss-Prot: Q96AA8NCBI Gene ID: 9832
SDS-PAGE MW	95kd
Concentration	1.0mg/ml
Formulation	Rabbit IgG in phosphate buffered saline (without Mg <sup>2+</sup> and Ca <sup>2+</sup> ), pH 7.4, 150mM NaCl, 0.02% sodium azide and 50% glycerol.
Storage	Store at -20°C

## Application Details

Western blotting: 1:500~1:3000

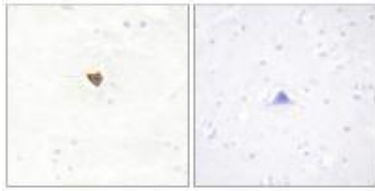
Immunohistochemistry: 1:50~1:100

## Images



Western blot analysis of extracts from LOVO cells and A549 cells, using JKIP2 antibody #34023.

Immunohistochemistry analysis of paraffin-embedded human brain tissue using JKIP2 antibody #34023.



## Background

The protein encoded by this gene is reported to be a component of the Golgi matrix. It may act as a golgin protein by negatively regulating transit of secretory cargo and by acting as a structural scaffold of the Golgi. Alternative splicing results in multiple transcript variants.

Cruz-Garcia D., FEBS Lett. 581:3149-3156(2007).

Hartmann T.B., Br. J. Dermatol. 150:252-258(2004).

Nagase T., DNA Res. 5:31-39(1998).

Note: This product is for in vitro research use only and is not intended for use in humans or animals.