

ZNF148 Antibody

Catalog No: #34124

Package Size: #34124-1 50ul #34124-2 100ul

Orders: order@signalwayantibody.comSupport: tech@signalwayantibody.com

Description

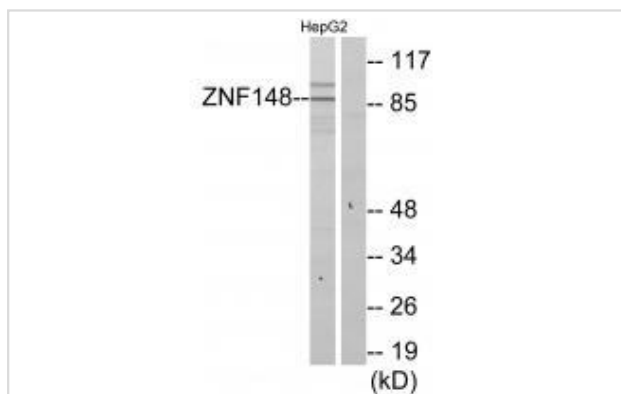
Product Name	ZNF148 Antibody
Host Species	Rabbit
Clonality	Polyclonal
Purification	The antibody was affinity-purified from rabbit antiserum by affinity-chromatography using epitope-specific immunogen.
Applications	WB IHC
Species Reactivity	Hu Ms Rt
Specificity	The antibody detects endogenous levels of total ZNF148 protein.
Immunogen Type	Peptide
Immunogen Description	Synthesized peptide derived from internal of human ZNF148.
Target Name	ZNF148
Other Names	Beta enolase repressor factor 1; G-rich box-binding protein; Transcription factor BFCOL1; Transcription factor ZBP-89; ZBP89
Accession No.	Swiss-Prot: Q9UQR1NCBI Gene ID: 7707
SDS-PAGE MW	89kd
Concentration	1.0mg/ml
Formulation	Rabbit IgG in phosphate buffered saline (without Mg ²⁺ and Ca ²⁺), pH 7.4, 150mM NaCl, 0.02% sodium azide and 50% glycerol.
Storage	Store at -20°C

Application Details

Western blotting: 1:500~1:3000

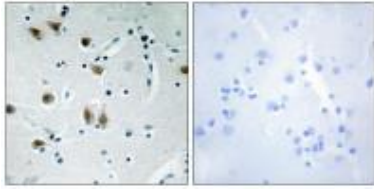
Immunohistochemistry: 1:50~1:100

Images



Western blot analysis of extracts from HepG2 cells, using ZNF148 antibody #34124.

Immunohistochemistry analysis of paraffin-embedded human brain tissue using ZNF148 antibody #34124.



Background

Involved in transcriptional regulation. Represses the transcription of a number of genes including gastrin, stromelysin and enolase. Binds to the G-rich box in the enhancer region of these genes.

Beausoleil S.A., Proc. Natl. Acad. Sci. U.S.A. 101:12130-12135(2004).

Boopathi E., J. Biol. Chem. 279:35242-35254(2004).

Beausoleil S.A., Nat. Biotechnol. 24:1285-1292(2006).

Note: This product is for in vitro research use only and is not intended for use in humans or animals.