

Vimentin Antibody

Catalog No: #21488

Package Size: #21488-1 50ul #21488-2 100ul

Orders: order@signalwayantibody.comSupport: tech@signalwayantibody.com

Description

Product Name	Vimentin Antibody
Host Species	Rabbit
Clonality	Polyclonal
Purification	Antibodies were produced by immunizing rabbits with synthetic peptide and KLH conjugates. Antibodies were purified by affinity-chromatography using epitope-specific peptide.
Applications	WB IF
Species Reactivity	Hu Ms Rt Mk
Specificity	The antibody detects endogenous level of total Vimentin protein.
Immunogen Type	Peptide-KLH
Immunogen Description	Peptide sequence around aa.452~456(G-Q-V-I-N) derived from Human Vimentin.
Target Name	Vimentin
Other Names	CTRCT30
Accession No.	Swiss-Prot: P08670NCBI Protein: NP_003371.2
SDS-PAGE MW	57kd
Concentration	1.0mg/ml
Formulation	Supplied at 1.0mg/mL in phosphate buffered saline (without Mg ²⁺ and Ca ²⁺), pH 7.4, 150mM NaCl, 0.02% sodium azide and 50% glycerol.
Storage	Store at -20°C for long term preservation (recommended). Store at 4°C for short term use.

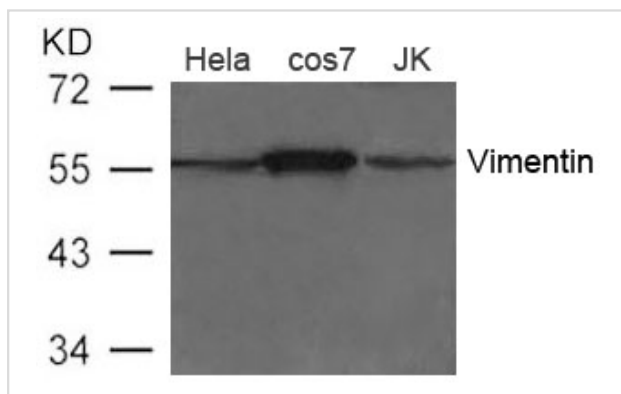
Application Details

Predicted MW: 57kd

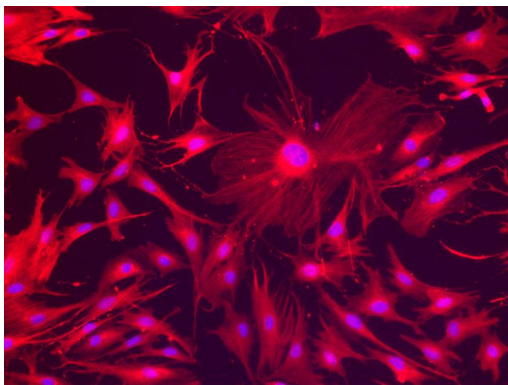
Western blotting: 1:500~1:1000

Immunofluorescence: 1:100~1:200

Images



Western blot analysis of extract from HeLa, cos7 and JK cells using Vimentin Antibody #21488



Immunofluorescence staining of paraffin-embedded mesenchymal stem cells using Vimentin Antibody #21488.

Background

Vimentins are class-III intermediate filaments found in various non-epithelial cells, especially mesenchymal cells.

Sommers C.L., Walker-Jones D., Heckford S.E., Worland P., Valverius E., Clark R., McCormick F.,
Cancer Res. 49:4258-4263(1989)

Kang S.-M., Shin M.-J., Kim J.-H., Oh J.-W. Proteomics 5:2227-2237(2005)

Ahmed B.A., Bukhari I.A., Jeffus B.C., Harney J.T., Thyparambil S., Ziu E., Fraer M., Rusch N.J. PLoS ONE 4:E4730-E4730(2009)

Published Papers

el at., Flotillin-1 enhances radioresistance through reducing radiation-induced DNA damage and promoting immune escape via STING signaling pathway in non-small cell lung cancerInCancer Biol TherOn2023 Dec 31byYingying Wang?1,?Lu Meng et al..PMID:?37131290, , (2023)

[PMID:37131290](#)

el at., HIV gp120/Tat protein-induced epithelial-mesenchymal transition promotes the progression of cervical lesionsInAIDS Res TherOn2023 Nov 19byPeizhi Wang?#?1?2,?Baojun Yang et al..PMID:?37981694, , (2023)

[PMID:37981694](#)

el at., Qingda granule ameliorates vascular remodeling and phenotypic transformation of adventitial fibroblasts via suppressing the TGF- β 1/Smad2/3 pathwayIn J EthnopharmacolOn2023 Sep 15byMeizhu Wu , Siyu Zhang et al..PMID:37100260, , (2023)

[PMID:37100260](#)

el at., A Novel Airway-Organoid Model Based on a Nano-Self-Assembling Peptide: Construction and Application in Adenovirus Infection StudiesIn Int J NanomedicineOn2023 Sep 13byYun-E Xu , Di-Shu Ao et al..PMID:37727651, , (2023)

[PMID:37727651](#)

el at., Ginsenoside Rg3 Suppresses Epithelial-Mesenchymal Transition via Downregulating Notch-Hes1 Signaling in Colon Cancer Cells. In Am J Chin Med on 2021 by Xiao Li, Wei Liu, et al..PMID:33371813, , (2021)

[PMID:33371813](#)

el at., Qingda granule attenuates cardiac fibrosis via suppression of the TGF- ϵ Y1/Smad2/3 signaling pathway in vitro and in vivo. In Biomed Pharmacother on 2021 May by Xiaoping Chen, Linzi Long, et al..PMID:33556875, , (2021)

[PMID:33556875](#)

el at., Exosomal miR 423 5p targets SUFU to promote cancer growth and metastasis and serves as a novel marker for gastric cancer.In Mol Carcinog. On 2018 Sep by Yang H, Fu H et al..PMID:29749061, , (2018)

[PMID:29749061](#)

el at., Exosomal TRIM3 is a novel marker and therapy target for gastric cancer.In J Exp Clin Cancer Res.On 2018 Jul 21 by Fu H, Yang H et al..PMID:30031392, , (2018)

[PMID:30031392](#)

el at., Prostaglandin E2 promotes hepatocellular carcinoma cell invasion through upregulation of YB-1 protein expression.In Int J Oncol on 2014 Mar

by Hai Zhang, Shanyu Cheng, et al..PMID: 24378923 , , (2016)

[PMID:24378923](#)

el at., Tumorigenic hybrids between mesenchymal stem cells and gastric cancer cells enhanced cancer proliferation, migration and stemness.In BMC Cancer on 2015 Oct 24 by Jianguo Xue , Yuan Zhu et al..PMID: 26498753, , (2015)

[PMID:26498753](#)

el at., Baicalein Inhibits Migration and Invasion of Gastric Cancer Cells Through Suppression of the TGF- ϵ Y Signaling Pathway.In Mol Med Rep on 2014 Oct by Fenglin Chen, Mingkai Zhuang et al..PMID: 25109410 , , (2014)

[PMID:25109410](#)

el at., Activation of mesenchymal stem cells by macrophages prompts human gastric cancer growth through NF- κ B pathway.In PLoS One on 2014 May 13 by Tingting Yang , Xu Zhang et al..PMID:24824968, , (2014)

[PMID:24824968](#)

el at., SALL4, a novel marker for human gastric carcinogenesis and metastasis.In Oncogene on 2014 Nov 27 by L Zhang , Z Xu et al..PMID:24276240, , (2014)

[PMID:24276240](#)

Chuanxi Tian, Yifan Gong, Ying Yang el at., Foxg1 Has an Essential Role in Postnatal Development of the Dentate Gyrus., The Journal of Neuroscience, 32(9):2931η— C2949(2012)

[PMID:22378868](#)

Note: This product is for in vitro research use only and is not intended for use in humans or animals.