

LAMA5 Antibody

Catalog No: #34275



Package Size: #34275-1 50ul #34275-2 100ul

Orders: order@signalwayantibody.comSupport: tech@signalwayantibody.com

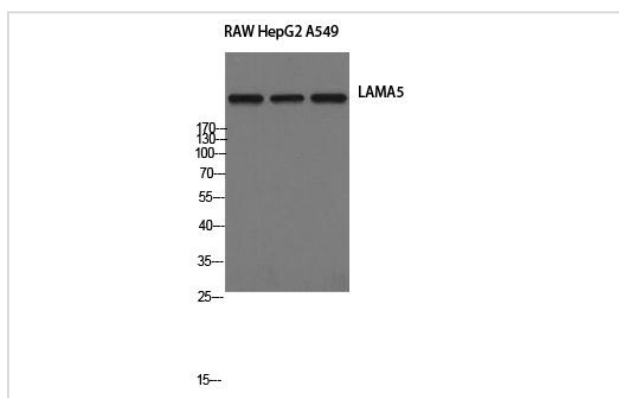
Description

Product Name	LAMA5 Antibody
Host Species	Rabbit
Clonality	Polyclonal
Purification	The antibody was affinity-purified from rabbit antiserum by affinity-chromatography using epitope-specific immunogen.
Applications	WB;IHC;IF
Species Reactivity	Hu Ms
Specificity	The antibody detects endogenous levels of LAMA5 protein.
Immunogen Type	Peptide
Immunogen Description	The antiserum was produced against synthesized peptide derived from human LAMA5.
Target Name	LAMA5
Other Names	Laminin subunit alpha-5; KIAA0533; KIAA1907;
Accession No.	Swiss-Prot: O15230NCBI Gene ID: 3911
SDS-PAGE MW	400kd
Concentration	1.0mg/ml
Formulation	Liquid in PBS containing 50% glycerol, 0.5% BSA and 0.02% sodium azide.
Storage	Store at -20°C

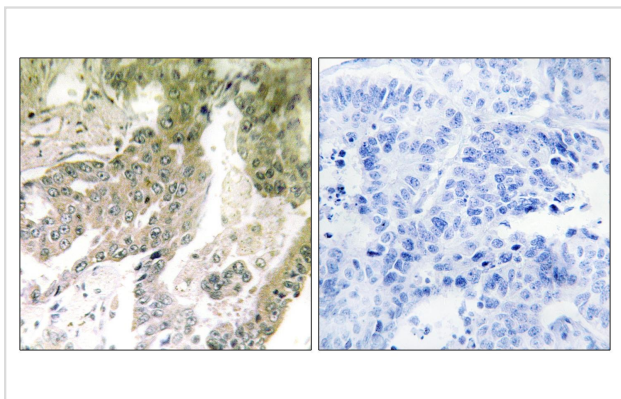
Application Details

WB 1:500 - 1:2000. IHC: 1:100-300 IF 1:100-300

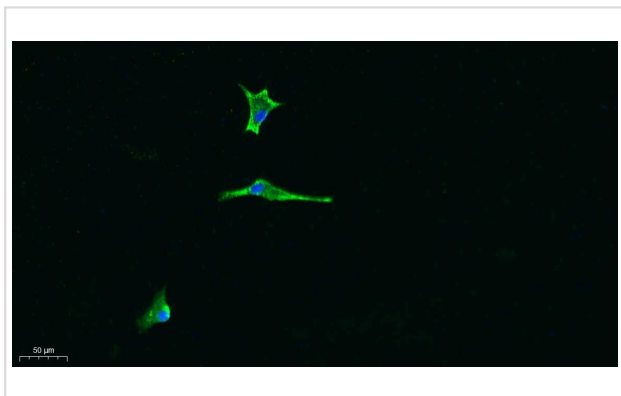
Images



Western Blot analysis of RAW HepG2 A549 cells



Immunohistochemistry analysis of paraffin-embedded human lung carcinoma tissue, using LAMA5 Antibody. The picture on the right is blocked with the synthesized peptide.



Immunofluorescence analysis of A549. 1, primary Antibody was diluted at 1:200(4°C overnight). 2, Goat Anti Rabbit IgG (H&L) - Alexa Fluor 488 Secondary antibody was diluted at 1:1000(room temperature, 50min).3, Picture B: DAPI(blue) 10min.

Background

This gene encodes one of the vertebrate laminin alpha chains. Laminins, a family of extracellular matrix glycoproteins, are the major noncollagenous constituent of basement membranes. They have been implicated in a wide variety of biological processes including cell adhesion, differentiation, migration, signaling, neurite outgrowth and metastasis. Laminins are composed of 3 non identical chains: laminin alpha, beta and gamma (formerly A, B1, and B2, respectively) and they form a cruciform structure consisting of 3 short arms, each formed by a different chain, and a long arm composed of all 3 chains. Each laminin chain is a multidomain protein encoded by a distinct gene. The protein encoded by this gene is the alpha-5 subunit of laminin-10 (laminin-511), laminin-11 (laminin-521) and laminin-15 (laminin-523). Binding to cells via a high affinity receptor, laminin is thought to mediate the attachment, migration and organization of cells into tissues during embryonic development by interacting with other extracellular matrix components.

Deloukas P., *ure* 414:865-871(2001).

Nagase T., *DNA Res.* 8:179-187(2001).

Nagase T., *DNA Res.* 5:31-39(1998)

Note: This product is for in vitro research use only and is not intended for use in humans or animals.