

## CD3E Antibody

Catalog No: #21622

Package Size: #21622-1 50ul #21622-2 100ul

Orders: [order@signalwayantibody.com](mailto:order@signalwayantibody.com)Support: [tech@signalwayantibody.com](mailto:tech@signalwayantibody.com)

## Description

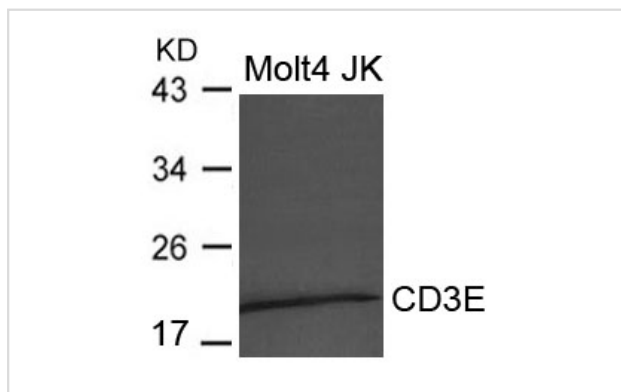
Product Name	CD3E Antibody
Host Species	Rabbit
Clonality	Polyclonal
Purification	Antibodies were produced by immunizing rabbits with synthetic peptide and KLH conjugates. Antibodies were purified by affinity-chromatography using epitope-specific peptide.
Applications	WB
Species Reactivity	Hu Ms Rt
Specificity	The antibody detects endogenous level of total CD3E protein.
Immunogen Type	Peptide-KLH
Immunogen Description	Peptide sequence around aa.197~201( D-L-Y-S-G) derived from Human CD3E.
Target Name	CD3E
Other Names	T3E; TCRE; FLJ18683
Accession No.	Swiss-Prot: P07766NCBI Protein: NP_000724.1
Concentration	1.0mg/ml
Formulation	Supplied at 1.0mg/mL in phosphate buffered saline (without Mg <sup>2+</sup> and Ca <sup>2+</sup> ), pH 7.4, 150mM NaCl, 0.02% sodium azide and 50% glycerol.
Storage	Store at -20°C for long term preservation (recommended). Store at 4°C for short term use.

## Application Details

Predicted MW: 21kd

Western blotting: 1:500~1:1000

## Images



Western blot analysis of extract from Molt4 and JK cells using CD3E Antibody #21622

## Background

The CD3 complex mediates signal transduction.

---

Note: This product is for in vitro research use only and is not intended for use in humans or animals.