

## VEGFR1 Antibody

Catalog No: #21631

Package Size: #21631-1 50ul #21631-2 100ul

Orders: [order@signalwayantibody.com](mailto:order@signalwayantibody.com)Support: [tech@signalwayantibody.com](mailto:tech@signalwayantibody.com)

## Description

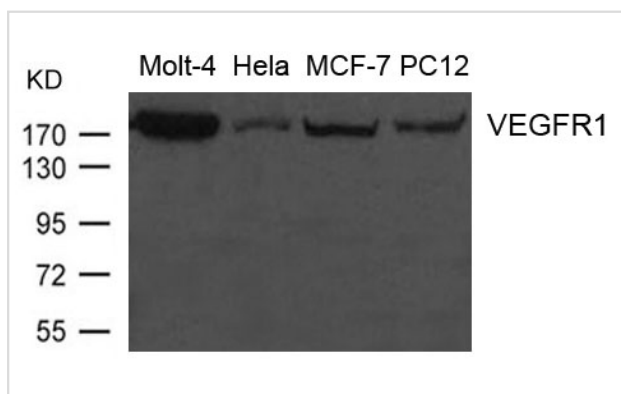
Product Name	VEGFR1 Antibody
Host Species	Rabbit
Clonality	Polyclonal
Purification	Antibodies were produced by immunizing rabbits with synthetic peptide and KLH conjugates. Antibodies were purified by affinity-chromatography using epitope-specific peptide.
Applications	WB
Species Reactivity	Hu Rt
Specificity	The antibody detects endogenous level of total VEGFR1 protein.
Immunogen Type	Peptide-KLH
Immunogen Description	Peptide sequence around aa.31~35 (D-P-E-L-S) derived from Human VEGFR1.
Target Name	VEGFR1
Other Names	FLT; FLT1;
Accession No.	Swiss-Prot: P17948NCBI Protein: NP_002010.2
Concentration	1.0mg/ml
Formulation	Supplied at 1.0mg/mL in phosphate buffered saline (without Mg <sup>2+</sup> and Ca <sup>2+</sup> ), pH 7.4, 150mM NaCl, 0.02% sodium azide and 50% glycerol.
Storage	Store at -20°C for long term preservation (recommended). Store at 4°C for short term use.

## Application Details

Predicted MW: 180kd

Western blotting: 1:500~1:1000

## Images



Western blot analysis of extract from Molt-4, HeLa, MCF-7 and PC12 cells using VEGFR1 Antibody #21631

## Background

Receptor for VEGF, VEGFB and PGF. Has a tyrosine-protein kinase activity. The VEGF-kinase ligand/receptor signaling system plays a key role in

vascular development and regulation of vascular permeability. Isoform SFlt1 may have an inhibitory role in angiogenesis.  
Rikova K., Guo A., Zeng Q., Possemato A. Cell 131:1190-1203(2007)

---

Note: This product is for in vitro research use only and is not intended for use in humans or animals.