

CLCN4 Antibody

Catalog No: #34579

Package Size: #34579-1 50ul #34579-2 100ul

Orders: order@signalwayantibody.comSupport: tech@signalwayantibody.com

Description

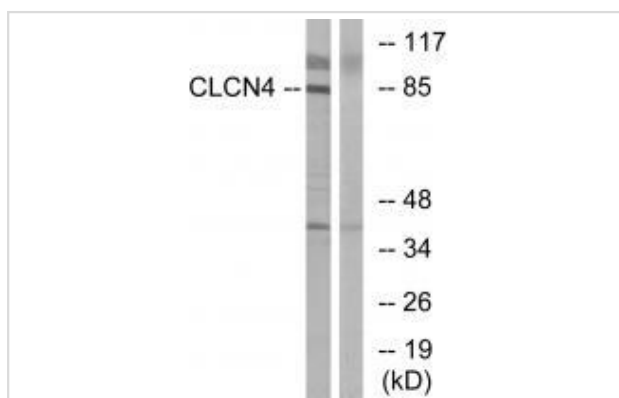
Product Name	CLCN4 Antibody
Host Species	Rabbit
Clonality	Polyclonal
Purification	The antibody was affinity-purified from rabbit antiserum by affinity-chromatography using epitope-specific immunogen.
Applications	WB IHC IF
Species Reactivity	Hu Ms Rt
Specificity	The antibody detects endogenous levels of total CLCN4 protein.
Immunogen Type	Peptide
Immunogen Description	Synthesized peptide derived from internal of human CLCN4.
Target Name	CLCN4
Other Names	chloride channel 4; CIC-4; CIC-4A; CLC4; MGC163150
Accession No.	Swiss-Prot: P51793NCBI Gene ID: 1183
SDS-PAGE MW	85kd
Concentration	1.0mg/ml
Formulation	Rabbit IgG in phosphate buffered saline (without Mg ²⁺ and Ca ²⁺), pH 7.4, 150mM NaCl, 0.02% sodium azide and 50% glycerol.
Storage	Store at -20°C

Application Details

Western blotting: 1:500~1:3000

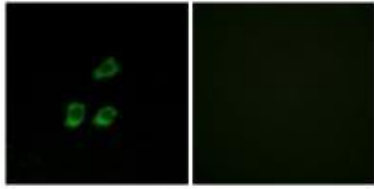
Immunofluorescence: 1:100~1:500

Images



Western blot analysis of extracts from MCF-7 cells, using CLCN4 antibody #34579.

Immunofluorescence analysis of HUVEC cells, using CLCN4 antibody #34579.



Background

Proton-coupled chloride transporter. Functions as antiport system and exchanges chloride ions against protons.

van Slegtenhorst M.A., Hum. Mol. Genet. 3:547-552(1994).

Kawasaki M., Am. J. Physiol. 277:C948-C954(1999).

Rae J.L.; Submitted (JUL-1999) to the EMBL/GenBank/DDBJ databases.

Published Papers

el at., Identification and functional analysis of a novel de novo missense mutation located in the initiation codon of LAMP2 associated with early onset female Danon diseaseInMol Genet Genomic MedOn2023 SepbyYongxiang Wang 1 2 3, Ming Bai et al..PMID: 37288668, , (2023)

[PMID:37288668](#)

Note: This product is for in vitro research use only and is not intended for use in humans or animals.