

ZDHHC15 Antibody

Catalog No: #34887



Package Size: #34887-1 50ul #34887-2 100ul

Orders: order@signalwayantibody.comSupport: tech@signalwayantibody.com

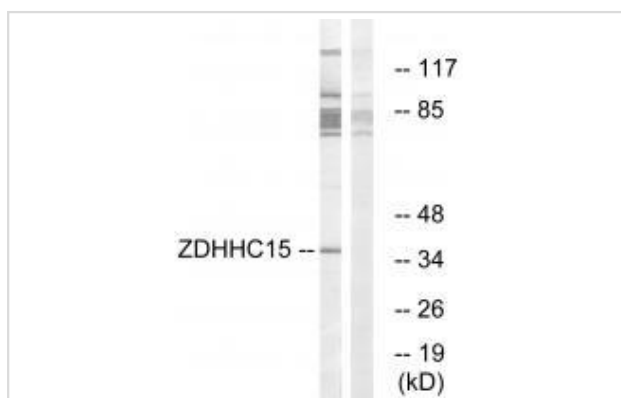
Description

| | |
|-----------------------|--|
| Product Name | ZDHHC15 Antibody |
| Host Species | Rabbit |
| Clonality | Polyclonal |
| Purification | The antibody was affinity-purified from rabbit antiserum by affinity-chromatography using epitope-specific immunogen. |
| Applications | WB |
| Species Reactivity | Hu Ms Rt |
| Specificity | The antibody detects endogenous levels of total ZDHHC15 protein. |
| Immunogen Type | Peptide |
| Immunogen Description | Synthesized peptide derived from C-terminal of human ZDHHC15. |
| Target Name | ZDHHC15 |
| Other Names | Palmitoyltransferase ZDHHC15; EC 2.3.1.-; Zinc finger DHHC domain-containing protein 15; DHHC-15; ZDHHC15 |
| Accession No. | Swiss-Prot: Q96MV8NCBI Gene ID: 158866 |
| SDS-PAGE MW | 38kd |
| Concentration | 1.0mg/ml |
| Formulation | Rabbit IgG in phosphate buffered saline (without Mg ²⁺ and Ca ²⁺), pH 7.4, 150mM NaCl, 0.02% sodium azide and 50% glycerol. |
| Storage | Store at -20°C |

Application Details

Western blotting: 1:500~1:3000

Images



Western blot analysis of extracts from Jurkat cells, using ZDHHC15 antibody #34887.

Background

Palmitoyltransferase specific for GAP43 and DLG4/PSD95 By similarity.

Clark H.F., Genome Res. 13:2265-2270(2003).

Ota T., Nat. Genet. 36:40-45(2004).

Ross M.T., Nature 434:325-337(2005).

Note: This product is for in vitro research use only and is not intended for use in humans or animals.