

## Annexin VI Antibody

Catalog No: #21672



Package Size: #21672-1 50ul #21672-2 100ul

Orders: [order@signalwayantibody.com](mailto:order@signalwayantibody.com)Support: [tech@signalwayantibody.com](mailto:tech@signalwayantibody.com)

## Description

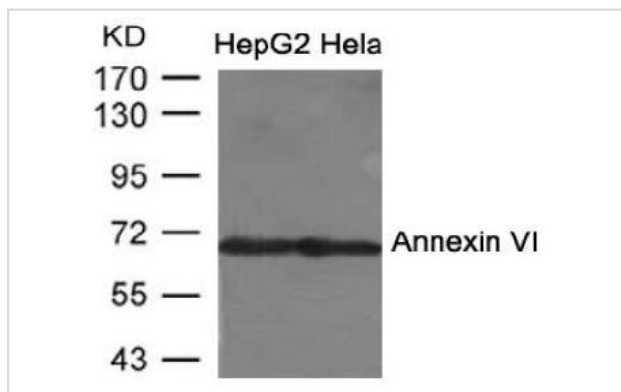
Product Name	Annexin VI Antibody
Host Species	Rabbit
Clonality	Polyclonal
Purification	Antibodies were produced by immunizing rabbits with synthetic peptide and KLH conjugates. Antibodies were purified by affinity-chromatography using epitope-specific peptide.
Applications	WB
Species Reactivity	Hu
Specificity	The antibody detects endogenous level of total Annexin VI protein.
Immunogen Type	Peptide-KLH
Immunogen Description	Peptide sequence around aa.6~10(Q-G-A-K-Y) derived from Human Annexin VI.
Target Name	Annexin VI
Other Names	ANX6; CBP68;
Accession No.	Swiss-Prot: P08133NCBI Protein: NP_001146.2
Concentration	1.0mg/ml
Formulation	Supplied at 1.0mg/mL in phosphate buffered saline (without Mg <sup>2+</sup> and Ca <sup>2+</sup> ), pH 7.4, 150mM NaCl, 0.02% sodium azide and 50% glycerol.
Storage	Store at -20°C for long term preservation (recommended). Store at 4°C for short term use.

## Application Details

Predicted MW: 68kd

Western blotting: 1:500~1:1000

## Images



Western blot analysis of extracts from HepG2 and HeLa cells using Annexin VI Antibody #21672.

## Background

May associate with CD21. May regulate the release of Ca<sup>2+</sup> from intracellular stores.

---

Note: This product is for in vitro research use only and is not intended for use in humans or animals.