

VTI1A Antibody

Catalog No: #35140

Package Size: #35140-1 50ul #35140-2 100ul

Orders: order@signalwayantibody.comSupport: tech@signalwayantibody.com

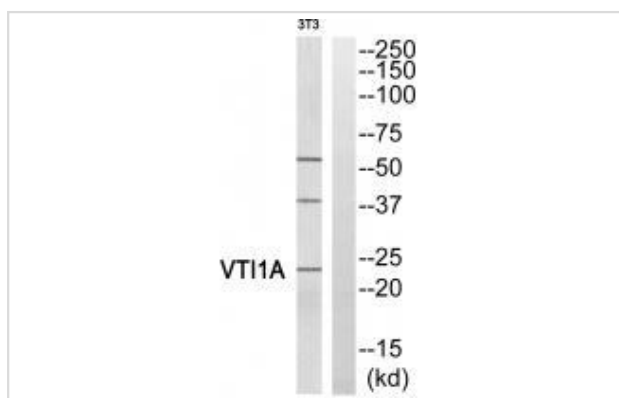
Description

Product Name	VTI1A Antibody
Host Species	Rabbit
Clonality	Polyclonal
Purification	The antibody was affinity-purified from rabbit antiserum by affinity-chromatography using epitope-specific immunogen.
Applications	WB
Species Reactivity	Hu Ms
Specificity	The antibody detects endogenous levels of total VTI1A protein.
Immunogen Type	Peptide
Immunogen Description	Synthesized peptide derived from internal of human VTI1A.
Target Name	VTI1A
Other Names	Vesicle transport through interaction with t-SNAREs homolog 1A; Vesicle transport v-SNARE protein Vti1-like 2; Vti1-rp2; VTI1A;
Accession No.	Swiss-Prot: Q96AJ9NCBI Gene ID: 143187
SDS-PAGE MW	23kd
Concentration	1.0mg/ml
Formulation	Rabbit IgG in phosphate buffered saline (without Mg ²⁺ and Ca ²⁺), pH 7.4, 150mM NaCl, 0.02% sodium azide and 50% glycerol.
Storage	Store at -20°C

Application Details

Western blotting: 1:500~1:3000

Images



Western blot analysis of extracts from 3T3 cells, using VTI1A antibody #35140.

Background

V-SNARE that mediates vesicle transport pathways through interactions with t-SNAREs on the target membrane. These interactions are proposed to mediate aspects of the specificity of vesicle trafficking and to promote fusion of the lipid bilayers. Involved in vesicular transport from the late endosomes to the trans-Golgi network. Along with VAMP7, involved in a non-conventional RAB1-dependent traffic route to the cell surface used by KCNIP1 and KCND2. May be involved in increased cytokine secretion associated with cellular senescence. UniProtKB O89116

Ota T., Nat. Genet. 36:40-45(2004).

Deloukas P., Nature 429:375-381(2004).

Mural R.J., Submitted (SEP-2005) to the EMBL/GenBank/DDBJ databases.

Note: This product is for in vitro research use only and is not intended for use in humans or animals.