

## WASF2 Antibody

Catalog No: #35147



Package Size: #35147-1 50ul #35147-2 100ul

Orders: order@signalwayantibody.com

Support: tech@signalwayantibody.com

## Description

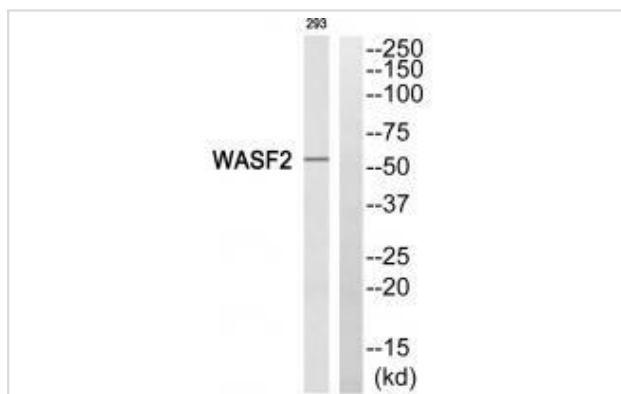
Product Name	WASF2 Antibody
Host Species	Rabbit
Clonality	Polyclonal
Purification	The antibody was affinity-purified from rabbit antiserum by affinity-chromatography using epitope-specific immunogen.
Applications	WB IHC
Species Reactivity	Hu
Specificity	The antibody detects endogenous levels of total WASF2 protein.
Immunogen Type	Peptide
Immunogen Description	Synthesized peptide derived from internal of human WASF2.
Target Name	WASF2
Other Names	Wiskott-Aldrich syndrome protein family member 2/WASP family protein member 2; Protein WAVE-2; Verprolin homology domain-containing protein 2; WASF2;
Accession No.	Swiss-Prot: Q9Y6W5/NCBI Gene ID: 10163
SDS-PAGE MW	54kd
Concentration	1.0mg/ml
Formulation	Rabbit IgG in phosphate buffered saline (without Mg <sup>2+</sup> and Ca <sup>2+</sup> ), pH 7.4, 150mM NaCl, 0.02% sodium azide and 50% glycerol.
Storage	Store at -20°C

## Application Details

Western blotting: 1:500~1:3000

Immunohistochemistry: 1:50~1:100

## Images



Western blot analysis of extracts from 293 cells, using WASF2 antibody #35147.

Immunohistochemistry analysis of paraffin-embedded human pancreas tissue, using WASF2 antibody #35147.



## Background

Downstream effector molecule involved in the transmission of signals from tyrosine kinase receptors and small GTPases to the actin cytoskeleton. Promotes formation of actin filaments. Part of the WAVE complex that regulates lamellipodia formation. The WAVE complex regulates actin filament reorganization via its interaction with the Arp2/3 complex.

Suetsugu S., *Biochem. Biophys. Res. Commun.* 260:296-302(1999).

Gregory S.G., *Nature* 441:315-321(2006).

Miki H., *Nature* 408:732-735(2000).

Note: This product is for in vitro research use only and is not intended for use in humans or animals.