

ZBTB40 Antibody

Catalog No: #35150

Package Size: #35150-1 50ul #35150-2 100ul

Orders: order@signalwayantibody.comSupport: tech@signalwayantibody.com

Description

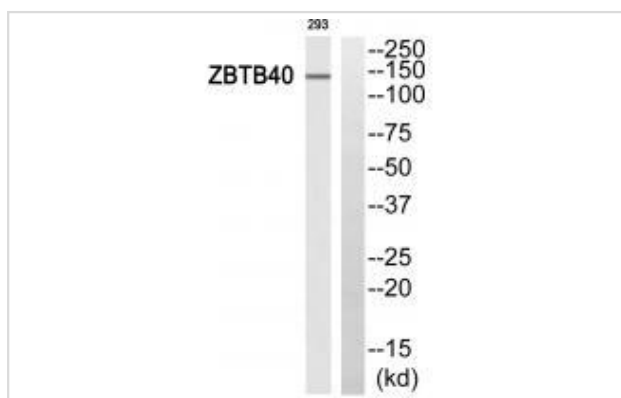
Product Name	ZBTB40 Antibody
Host Species	Rabbit
Clonality	Polyclonal
Purification	The antibody was affinity-purified from rabbit antiserum by affinity-chromatography using epitope-specific immunogen.
Applications	WB IHC
Species Reactivity	Hu
Specificity	The antibody detects endogenous levels of total ZBTB40 protein.
Immunogen Type	Peptide
Immunogen Description	Synthesized peptide derived from C-terminal of human ZBTB40.
Target Name	ZBTB40
Other Names	Zinc finger and BTB domain-containing protein 40; ZBTB40; KIAA0478;
Accession No.	Swiss-Prot: Q9NUA8NCBI Gene ID: 9923
SDS-PAGE MW	138kd
Concentration	1.0mg/ml
Formulation	Rabbit IgG in phosphate buffered saline (without Mg ²⁺ and Ca ²⁺), pH 7.4, 150mM NaCl, 0.02% sodium azide and 50% glycerol.
Storage	Store at -20°C

Application Details

Western blotting: 1:500~1:3000

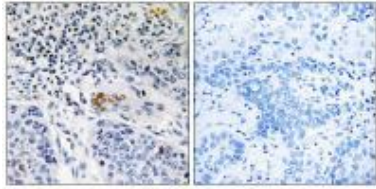
Immunohistochemistry: 1:50~1:100

Images



Western blot analysis of extracts from 293 cells, using ZBTB40 antibody #35150.

Immunohistochemistry analysis of paraffin-embedded human lung carcinoma tissue, using ZBTB40 antibody #35150.



Background

May be involved in transcriptional regulation.

Seki N., DNA Res. 4:345-349(1997).

Nakajima D., DNA Res. 9:99-106(2002).

Gregory S.G., Nature 441:315-321(2006).

Note: This product is for in vitro research use only and is not intended for use in humans or animals.