

ZSCAN22 Antibody

Catalog No: #35151

Package Size: #35151-1 50ul #35151-2 100ul

Orders: order@signalwayantibody.comSupport: tech@signalwayantibody.com

Description

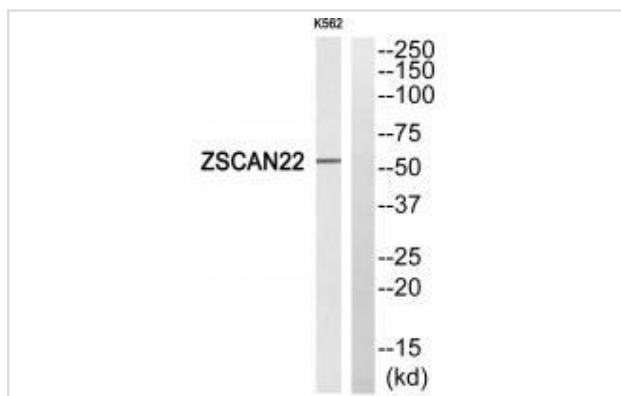
Product Name	ZSCAN22 Antibody
Host Species	Rabbit
Clonality	Polyclonal
Purification	The antibody was affinity-purified from rabbit antiserum by affinity-chromatography using epitope-specific immunogen.
Applications	WB IHC
Species Reactivity	Hu
Specificity	The antibody detects endogenous levels of total ZSCAN22 protein.
Immunogen Type	Peptide
Immunogen Description	Synthesized peptide derived from internal of human ZSCAN22.
Target Name	ZSCAN22
Other Names	Zinc finger and SCAN domain-containing protein 22; Zinc finger protein 50; Krueppel-related zinc finger protein 2; Protein HKR2; ZSCAN22
Accession No.	Swiss-Prot: P10073NCBI Gene ID: 342945
SDS-PAGE MW	55kd
Concentration	1.0mg/ml
Formulation	Rabbit IgG in phosphate buffered saline (without Mg ²⁺ and Ca ²⁺), pH 7.4, 150mM NaCl, 0.02% sodium azide and 50% glycerol.
Storage	Store at -20°C

Application Details

Western blotting: 1:500~1:3000

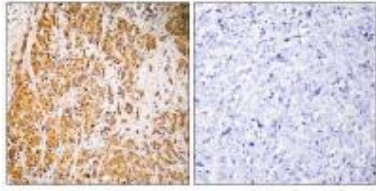
Immunohistochemistry: 1:50~1:100

Images



Western blot analysis of extracts from K562 cells, using ZSCAN22 antibody #35151.

Immunohistochemistry analysis of paraffin-embedded human breast carcinoma tissue, using ZSCAN22 antibody #35151.



Background

May be involved in transcriptional regulation.

Ota T., Nat. Genet. 36:40-45(2004).

Bechtel S., BMC Genomics 8:399-399(2007).

Lichter P., Genomics 13:999-1007(1992).

Note: This product is for in vitro research use only and is not intended for use in humans or animals.