

ZC3H13 Antibody

Catalog No: #35153

Package Size: #35153-1 50ul #35153-2 100ul

Orders: order@signalwayantibody.comSupport: tech@signalwayantibody.com

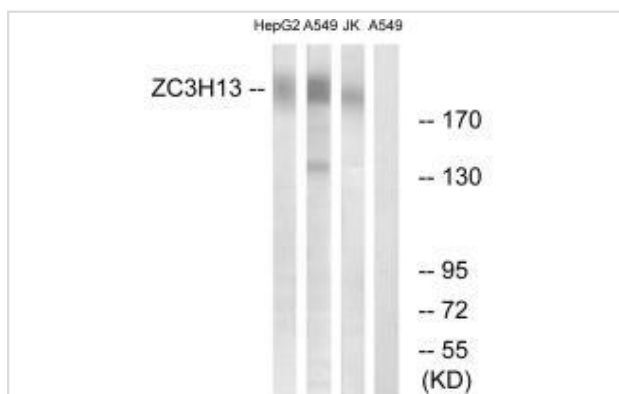
Description

Product Name	ZC3H13 Antibody
Host Species	Rabbit
Clonality	Polyclonal
Purification	The antibody was affinity-purified from rabbit antiserum by affinity-chromatography using epitope-specific immunogen.
Applications	WB
Species Reactivity	Hu
Specificity	The antibody detects endogenous levels of total ZC3H13 protein.
Immunogen Type	Peptide
Immunogen Description	Synthesized peptide derived from internal of human ZC3H13.
Target Name	ZC3H13
Other Names	ZC313;
Accession No.	Swiss-Prot: Q5T200NCBI Gene ID: 23091
SDS-PAGE MW	200kd
Concentration	1.0mg/ml
Formulation	Rabbit IgG in phosphate buffered saline (without Mg ²⁺ and Ca ²⁺), pH 7.4, 150mM NaCl, 0.02% sodium azide and 50% glycerol.
Storage	Store at -20°C

Application Details

Western blotting: 1:500~1:3000

Images



Western blot analysis of extracts from HepG2 cells, A549 cells and Jurkat cells, using ZC3H13 antibody #35153.

Background

2 isoforms of the human protein are produced by alternative splicing.

Shan Y.X., Submitted (APR-2003) to the EMBL/GenBank/DDBJ databases.

Dunham A., Nature 428:522-528(2004).

Wiemann S., Genome Res. 11:422-435(2001).

Note: This product is for in vitro research use only and is not intended for use in humans or animals.