

ZC3H8 Antibody

Catalog No: #35154

Package Size: #35154-1 50ul #35154-2 100ul

Orders: order@signalwayantibody.com

Support: tech@signalwayantibody.com

Description

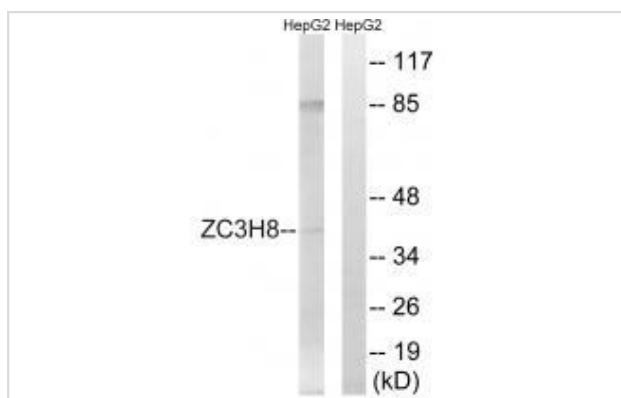
Product Name	ZC3H8 Antibody
Host Species	Rabbit
Clonality	Polyclonal
Purification	The antibody was affinity-purified from rabbit antiserum by affinity-chromatography using epitope-specific immunogen.
Applications	WB IHC
Species Reactivity	Hu
Specificity	The antibody detects endogenous levels of total ZC3H8 protein.
Immunogen Type	Peptide
Immunogen Description	Synthesized peptide derived from internal of human ZC3H8.
Target Name	ZC3H8
Other Names	Zinc finger CCCH domain-containing protein 8; ZC3H8; ZC3HDC8;
Accession No.	Swiss-Prot: Q8N5P1NCBI Gene ID: 84524
SDS-PAGE MW	40kd
Concentration	1.0mg/ml
Formulation	Rabbit IgG in phosphate buffered saline (without Mg ²⁺ and Ca ²⁺), pH 7.4, 150mM NaCl, 0.02% sodium azide and 50% glycerol.
Storage	Store at -20°C

Application Details

Western blotting: 1:500~1:3000

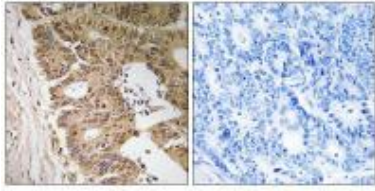
Immunohistochemistry: 1:50~1:100

Images



Western blot analysis of extracts from HepG2 cells, using ZC3H8 antibody #35154.

Immunohistochemistry analysis of paraffin-embedded human colon carcinoma tissue, using ZC3H8 antibody #35154.



Background

Acts as a transcriptional repressor of the GATA3 promoter. Sequence-specific DNA-binding factor that binds to the 5'-AGGTCTC-3' sequence within the negative cis-acting element intronic regulatory region (IRR) of the GATA3 gene. By similarity. Induces thymocyte apoptosis when overexpressed, which may indicate a role in regulation of thymocyte homeostasis.

Zhuang D.Z., Submitted (JAN-2001) to the EMBL/GenBank/DDBJ databases.

The MGC Project Team, Genome Res. 14:2121-2127(2004).

Hwang E.S., Immunology 106:464-469(2002).

Note: This product is for in vitro research use only and is not intended for use in humans or animals.