

ZNF420 Antibody

Catalog No: #35157

Package Size: #35157-1 50ul #35157-2 100ul

Orders: order@signalwayantibody.com

Support: tech@signalwayantibody.com

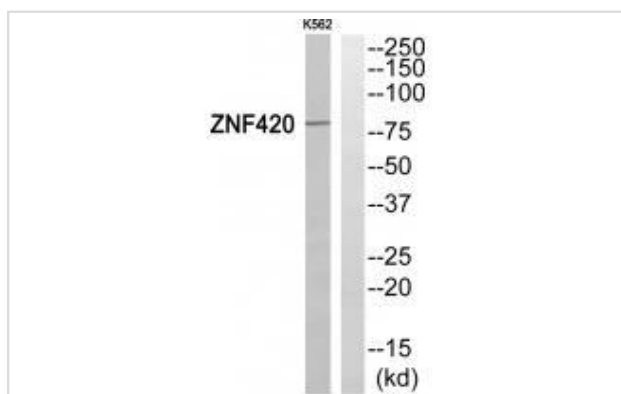
Description

Product Name	ZNF420 Antibody
Host Species	Rabbit
Clonality	Polyclonal
Purification	The antibody was affinity-purified from rabbit antiserum by affinity-chromatography using epitope-specific immunogen.
Applications	WB
Species Reactivity	Hu
Specificity	The antibody detects endogenous levels of total ZNF420 protein.
Immunogen Type	Peptide
Immunogen Description	Synthesized peptide derived from internal of human ZNF420.
Target Name	ZNF420
Other Names	Zinc finger protein 420; ZNF420;
Accession No.	Swiss-Prot: Q8TAQ5NCBI Gene ID: 147923
SDS-PAGE MW	80kd
Concentration	1.0mg/ml
Formulation	Rabbit IgG in phosphate buffered saline (without Mg ²⁺ and Ca ²⁺), pH 7.4, 150mM NaCl, 0.02% sodium azide and 50% glycerol.
Storage	Store at -20°C

Application Details

Western blotting: 1:500~1:3000

Images



Western blot analysis of extracts from K562 cells, using ZNF420 antibody #35157.

Background

May be involved in transcriptional regulation.

Ota T., Nat. Genet. 36:40-45(2004).

The MGC Project Team, Genome Res. 14:2121-2127(2004).

Matsuoka S., Science 316:1160-1166(2007).

Note: This product is for in vitro research use only and is not intended for use in humans or animals.