

ZADH1 Antibody

Catalog No: #35164

Package Size: #35164-1 50ul #35164-2 100ul

Orders: order@signalwayantibody.comSupport: tech@signalwayantibody.com

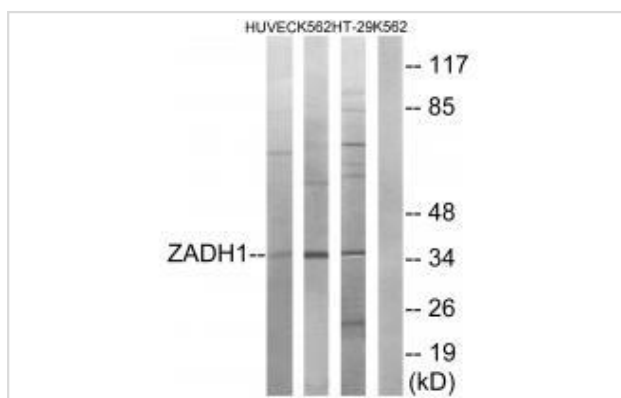
Description

Product Name	ZADH1 Antibody
Host Species	Rabbit
Clonality	Polyclonal
Purification	The antibody was affinity-purified from rabbit antiserum by affinity-chromatography using epitope-specific immunogen.
Applications	WB
Species Reactivity	Hu Ms Rt
Specificity	The antibody detects endogenous levels of total ZADH1 protein.
Immunogen Type	Peptide
Immunogen Description	Synthesized peptide derived from internal of human ZADH1.
Target Name	ZADH1
Other Names	Prostaglandin reductase 2; PRG-2; EC 1.3.1.48; 15-oxoprostaglandin 13-reductase; Zinc-binding alcohol dehydrogenase domain-containing protein 1
Accession No.	Swiss-Prot: Q8N8N7NCBI Gene ID: 145482
SDS-PAGE MW	35kd
Concentration	1.0mg/ml
Formulation	Rabbit IgG in phosphate buffered saline (without Mg ²⁺ and Ca ²⁺), pH 7.4, 150mM NaCl, 0.02% sodium azide and 50% glycerol.
Storage	Store at -20°C

Application Details

Western blotting: 1:500~1:3000

Images



Western blot analysis of extracts from HUVEC cells, K562 cells and HT-29 cells, using ZADH1 antibody #35164.

Background

Functions as 15-oxo-prostaglandin 13-reductase and acts on 15-keto-PGE1, 15-keto-PGE2, 15-keto-PGE1-alpha and 15-keto-PGE2-alpha with highest activity towards 15-keto-PGE2. Overexpression represses transcriptional activity of PPARG and inhibits adipocyte differentiation By similarity.

Zhang L., Cytogenet. Genome Res. 103:79-83(2003).

Zheng H., Submitted (SEP-2003) to the EMBL/GenBank/DDBJ databases.

Ota T., Nat. Genet. 36:40-45(2004).

Note: This product is for in vitro research use only and is not intended for use in humans or animals.