

## ZADH2 Antibody

Catalog No: #35165

Package Size: #35165-1 50ul #35165-2 100ul

Orders: order@signalwayantibody.com

Support: tech@signalwayantibody.com

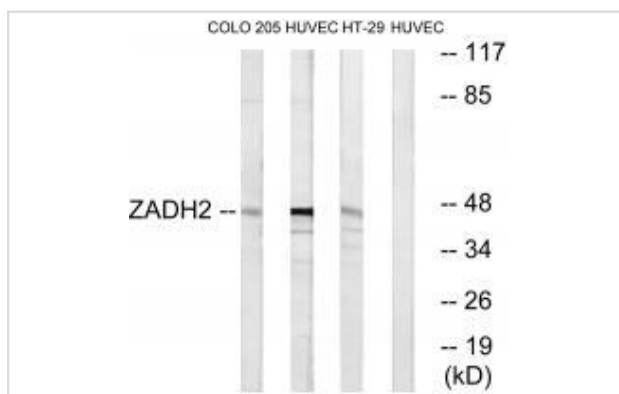
## Description

Product Name	ZADH2 Antibody
Host Species	Rabbit
Clonality	Polyclonal
Purification	The antibody was affinity-purified from rabbit antiserum by affinity-chromatography using epitope-specific immunogen.
Applications	WB
Species Reactivity	Hu Ms
Specificity	The antibody detects endogenous levels of total ZADH2 protein.
Immunogen Type	Peptide
Immunogen Description	Synthesized peptide derived from internal of human ZADH2.
Target Name	ZADH2
Other Names	EC 1.-.-.; zinc-binding alcohol dehydrogenase domain-containing 2;
Accession No.	Swiss-Prot: Q8N4Q0NCBI Gene ID: 284273
SDS-PAGE MW	45kd
Concentration	1.0mg/ml
Formulation	Rabbit IgG in phosphate buffered saline (without Mg <sup>2+</sup> and Ca <sup>2+</sup> ), pH 7.4, 150mM NaCl, 0.02% sodium azide and 50% glycerol.
Storage	Store at -20°C

## Application Details

Western blotting: 1:500~1:3000

## Images



Western blot analysis of extracts from COLO cells, HUVEC cells and HT-29 cells, using ZADH2 antibody #35165.

## Background

Belongs to the zinc-containing alcohol dehydrogenase family. Quinone oxidoreductase subfamily.

The MGC Project Team; The MGC Project Team;  
Bunkoczi G., Submitted (SEP-2005) to the PDB data bank.

---

Note: This product is for in vitro research use only and is not intended for use in humans or animals.