

## ZP1 Antibody

Catalog No: #35166

Package Size: #35166-1 50ul #35166-2 100ul

Orders: [order@signalwayantibody.com](mailto:order@signalwayantibody.com)Support: [tech@signalwayantibody.com](mailto:tech@signalwayantibody.com)

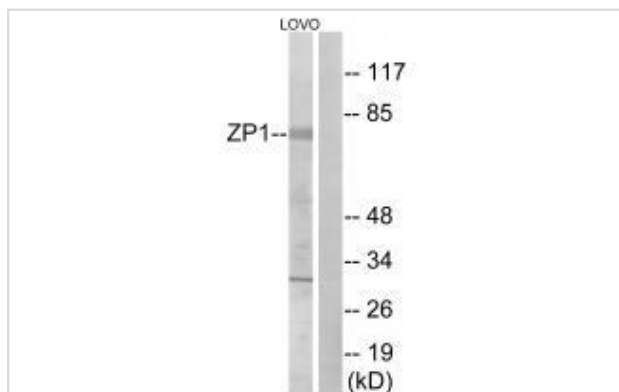
## Description

Product Name	ZP1 Antibody
Host Species	Rabbit
Clonality	Polyclonal
Purification	The antibody was affinity-purified from rabbit antiserum by affinity-chromatography using epitope-specific immunogen.
Applications	WB
Species Reactivity	Hu
Specificity	The antibody detects endogenous levels of total ZP1 protein.
Immunogen Type	Peptide
Immunogen Description	Synthesized peptide derived from internal of human ZP1.
Target Name	ZP1
Other Names	mgc87693; zona pellucida glycoprotein 1; zona pellucida glycoprotein 1 (sperm receptor); zp1; zp1 protein
Accession No.	Swiss-Prot: P60852NCBI Gene ID: 22917
SDS-PAGE MW	70kd
Concentration	1.0mg/ml
Formulation	Rabbit IgG in phosphate buffered saline (without Mg <sup>2+</sup> and Ca <sup>2+</sup> ), pH 7.4, 150mM NaCl, 0.02% sodium azide and 50% glycerol.
Storage	Store at -20°C

## Application Details

Western blotting: 1:500~1:3000

## Images



Western blot analysis of extracts from LOVO cells, using ZP1 antibody #35166.

## Background

The mammalian zona pellucida, which mediates species-specific sperm binding, induction of the acrosome reaction and prevents post-fertilization

polyspermy, is composed of three to four glycoproteins, ZP1, ZP2, ZP3, and ZP4. ZP1 ensures the structural integrity of the zona pellucida.  
Hughes D.C., Biochim. Biophys. Acta 1447:303-306(1999).  
Taylor T.D., Nature 440:497-500(2006).

---

Note: This product is for in vitro research use only and is not intended for use in humans or animals.