

ZP4 Antibody

Catalog No: #35167

Package Size: #35167-1 50ul #35167-2 100ul

Orders: order@signalwayantibody.comSupport: tech@signalwayantibody.com

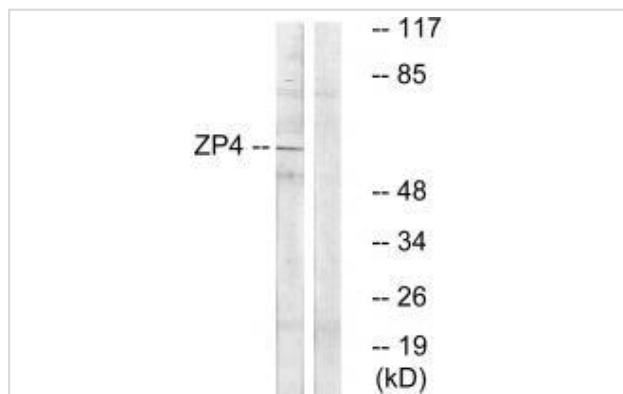
Description

Product Name	ZP4 Antibody
Host Species	Rabbit
Clonality	Polyclonal
Purification	The antibody was affinity-purified from rabbit antiserum by affinity-chromatography using epitope-specific immunogen.
Applications	WB
Species Reactivity	Hu
Specificity	The antibody detects endogenous levels of total ZP4 protein.
Immunogen Type	Peptide
Immunogen Description	Synthesized peptide derived from internal of human ZP4.
Target Name	ZP4
Other Names	ZBP; zona pellucida sperm-binding 4; zona pellucida sperm-binding B; ZP1; ZPB
Accession No.	Swiss-Prot: Q12836NCBI Gene ID: 57829
SDS-PAGE MW	65kd
Concentration	1.0mg/ml
Formulation	Rabbit IgG in phosphate buffered saline (without Mg ²⁺ and Ca ²⁺), pH 7.4, 150mM NaCl, 0.02% sodium azide and 50% glycerol.
Storage	Store at -20°C

Application Details

Western blotting: 1:500~1:3000

Images



Western blot analysis of extracts from Jurkat cells, using ZP4 antibody #35167.

Background

The mammalian zona pellucida, which mediates species-specific sperm binding, induction of the acrosome reaction and prevents post-fertilization

polyspermy, is composed of three to four glycoproteins, ZP1, ZP2, ZP3, and ZP4. ZP4 may act as a sperm receptor.

Harris J.D., DNA Seq. 4:361-393(1994).

Gregory S.G., Nature 441:315-321(2006).

The MGC Project Team; Genome Res. 14:2121-2127(2004).

Note: This product is for in vitro research use only and is not intended for use in humans or animals.