

## ZDHHC2 Antibody

Catalog No: #35205

Package Size: #35205-1 50ul #35205-2 100ul

Orders: order@signalwayantibody.com

Support: tech@signalwayantibody.com

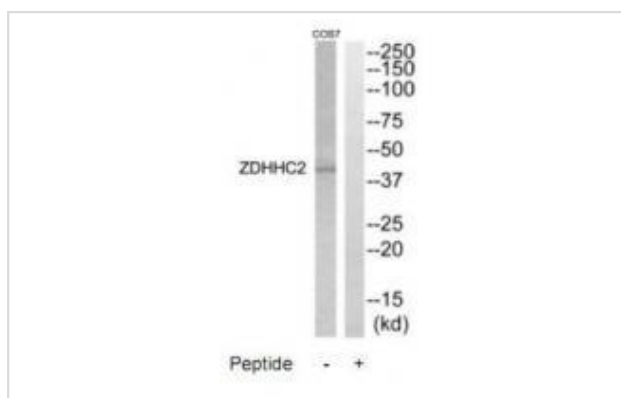
## Description

Product Name	ZDHHC2 Antibody
Host Species	Rabbit
Clonality	Polyclonal
Purification	The antibody was affinity-purified from rabbit antiserum by affinity-chromatography using epitope-specific immunogen.
Applications	WB
Species Reactivity	Hu
Specificity	The antibody detects endogenous levels of total ZDHHC2 protein.
Immunogen Type	Peptide
Immunogen Description	Synthesized peptide derived from internal of human ZDHHC2.
Target Name	ZDHHC2
Other Names	Palmitoyltransferase ZDHHC2; Zinc finger DHHC domain-containing protein 2; DHHC-2; Zinc finger protein 372; Reduced expression associated with metastasis protein
Accession No.	Swiss-Prot: Q9UIJ5NCBI Gene ID: 51201
SDS-PAGE MW	42kd
Concentration	1.0mg/ml
Formulation	Rabbit IgG in phosphate buffered saline (without Mg <sup>2+</sup> and Ca <sup>2+</sup> ), pH 7.4, 150mM NaCl, 0.02% sodium azide and 50% glycerol.
Storage	Store at -20°C

## Application Details

Western blotting: 1:500~1:3000

## Images



Western blot analysis of extracts from COS7 cells, using ZDHHC2 antibody #35205.

## Background

---

Palmitoyltransferase specific for GAP43 and DLG4/PSD95 By similarity.

Nakamura Y., Genes Chromosomes Cancer 29:9-15(2000).

The MGC Project Team, Genome Res. 14:2121-2127(2004).

---

Note: This product is for in vitro research use only and is not intended for use in humans or animals.