

# Calcium Sensing Receptor Antibody

Catalog No: #35338



Package Size: #35338-1 50ul #35338-2 100ul

Orders: [order@signalwayantibody.com](mailto:order@signalwayantibody.com)Support: [tech@signalwayantibody.com](mailto:tech@signalwayantibody.com)

## Description

Product Name	Calcium Sensing Receptor Antibody
Host Species	Rabbit
Clonality	Polyclonal
Purification	Antibodies were purified by antigen-affinity chromatography.
Applications	WB, ICC/IF, IHC-P
Species Reactivity	Human, Mouse, Rat
Specificity	The antibody detects endogenous levels of total Calcium Sensing Receptor protein.
Immunogen Type	Peptide
Immunogen Description	Recombinant protein encompassing a sequence within the Extracellular domain of human Calcium Sensing Receptor. The exact sequence is proprietary.
Target Name	Calcium Sensing Receptor
Other Names	CAR antibody; EIG8 antibody; FHH antibody; FIH antibody; GPRC2A antibody; HHC antibody; HHC1 antibody; MGC138441 antibody; NSHPT antibody; PCAR1 antibody; CASR antibody; parathyroid cell calcium-sensing receptor antibody; parathyroid Ca(2+)-sensing receptor
Accession No.	Swiss-Prot#:P41180;NCBI Gene#:846
SDS-PAGE MW	121kd
Formulation	PBS, 20% Glycerol
Storage	For short-term storage (1-2 weeks), store at 4B1C. For long-term storage, aliquot and store at -20B1C or below. Avoid multiple freeze-thaw cycles.

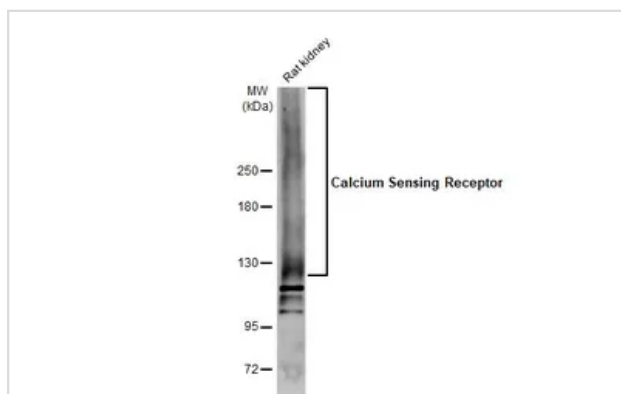
## Application Details

WB 1:500-1:3000

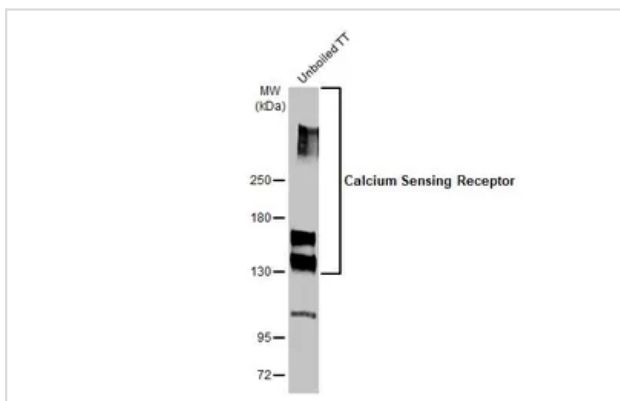
ICC/IF 1:100-1:1000

IHC-P 1:100-1:1000

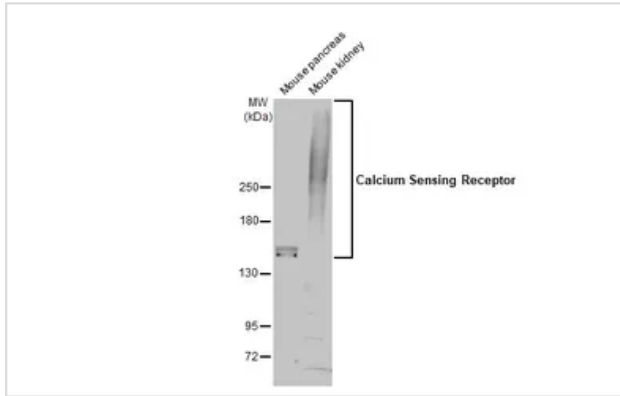
## Images



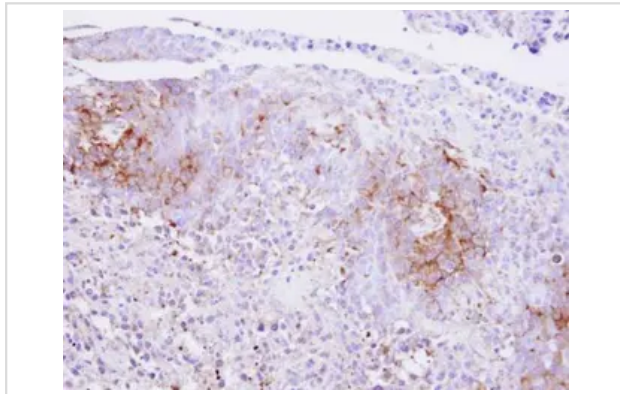
Rat tissue extract (50 ug) was separated by 5% SDS-PAGE, and the membrane was blotted with Calcium Sensing Receptor antibody diluted at 1:500. The HRP-conjugated anti-rabbit IgG antibody was used to detect the primary antibody.



Unboiled whole cell extract (30 ug) was separated by 5% SDS-PAGE, and the membrane was blotted with Calcium Sensing Receptor antibody diluted at 1:500. The HRP-conjugated anti-rabbit IgG antibody was used to detect the primary antibody.



Various tissue extracts (50 ug) were separated by 5% SDS-PAGE, and the membrane was blotted with Calcium Sensing Receptor antibody diluted at 1:500. The HRP-conjugated anti-rabbit IgG antibody was used to detect the primary antibody.



Immunohistochemical analysis of paraffin-embedded SAS xenograft, using Calcium Sensing Receptor antibody at 1:500 dilution.

## Background

The protein encoded by this gene is a G protein-coupled receptor that is expressed in the parathyroid hormone (PTH)-producing chief cells of the parathyroid gland, and the cells lining the kidney tubule. It senses small changes in circulating calcium concentration and couples this information to intracellular signaling pathways that modify PTH secretion or renal cation handling, thus this protein plays an essential role in maintaining mineral ion homeostasis. Mutations in this gene cause familial hypocalciuric hypercalcemia, familial, isolated hypoparathyroidism, and neonatal severe primary hyperparathyroidism. [provided by RefSeq]

## Published Papers

et al., Exosomes Derived from Akt -Modified Human Umbilical Cord Mesenchymal Stem Cells Improve Cardiac Regeneration and Promote Angiogenesis via Activating Platelet-Derived Growth Factor D. In *Stem Cells Transl Med* on 2017 Jan by Jie Ma, Yuanyuan Zhao, et al.. PMID:28170176, (2017)

[PMID:28170176](https://pubmed.ncbi.nlm.nih.gov/28170176/)

---

Note: This product is for in vitro research use only and is not intended for use in humans or animals.