

Cannabinoid Receptor 1 Antibody

Catalog No: #35345

Package Size: #35345-1 50ul #35345-2 100ul

Orders: order@signalwayantibody.com

Support: tech@signalwayantibody.com

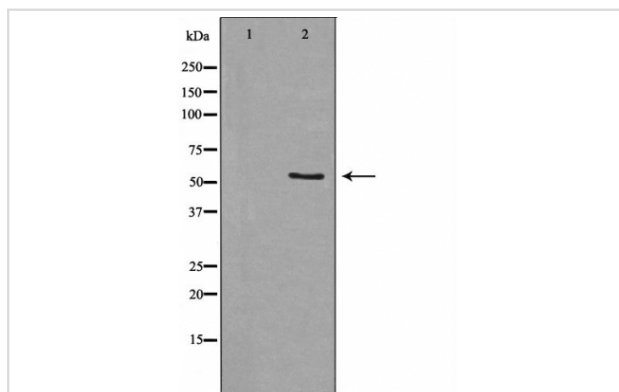
Description

| | |
|-----------------------|---|
| Product Name | Cannabinoid Receptor 1 Antibody |
| Host Species | Rabbit |
| Clonality | Polyclonal |
| Purification | Antibodies were purified by antigen-affinity chromatography. |
| Applications | WB |
| Species Reactivity | Hu Ms Rt |
| Specificity | The antibody detects endogenous levels of total Cannabinoid Receptor 1 protein. |
| Immunogen Type | Recombinant Protein |
| Immunogen Description | A synthesized peptide of human Cannabinoid Receptor 1 |
| Target Name | Cannabinoid Receptor 1 |
| Other Names | CANN6 antibody; CB-R antibody; CB1 antibody; CB1A antibody; CB1K5 antibody; CB1R antibody; CNR antibody; CNR1 antibody; central cannabinoid receptor antibody; cannabinoid receptor 1 antibody; cannabinoid receptor 1 (brain) antibody |
| Accession No. | Swiss-Prot#:P21554;NCBI Gene#:1268 |
| SDS-PAGE MW | 53kd |
| Concentration | 1mg/ml |
| Formulation | Rabbit IgG in phosphate buffered saline , pH 7.4, 150mM NaCl, 0.02% sodium azide and 50% glycerol. |
| Storage | Store at -20°C |

Application Details

Western blotting: 1:500-1:1000

Images



Western blot analysis of extracts from COS-7 cells and HT-29 cells, using Cannabinoid Receptor 1 antibody. The lane on the left is treated with the antigen-specific peptide.

Background

This gene encodes a protein that is one of two cannabinoid receptors. The cannabinoids, principally delta-9-tetrahydrocannabinol and synthetic

analogs, are psychoactive ingredients of marijuana. The cannabinoid receptors are members of the family of guanine-nucleotide-binding protein (G-protein) coupled receptors which inhibit adenylate cyclase activity in a dose-dependent, stereoselective and pertussis toxin-sensitive manner. The two receptors have been found to be involved in the cannabinoid-induced CNS effects (including alterations in mood and cognition) experienced by users of marijuana. Two transcript variants encoding different isoforms have been described for this gene. [provided by RefSeq]

Published Papers

el at., Cannabinoid 1 Receptor Antagonists Play a Neuroprotective Role in Chronic Alcoholic Hippocampal Injury Related to Pyroptosis Pathway. In Alcohol Clin Exp Res on 2020 Aug by Dingang Zhang, Xiaochen Liu, et al..PMID: 32524615, , (2020)

[PMID:32524615](#)

Note: This product is for in vitro research use only and is not intended for use in humans or animals.