

## ET-2 Antibody

Catalog No: #35400

Package Size: #35400-1 50ul #35400-2 100ul

Orders: [order@signalwayantibody.com](mailto:order@signalwayantibody.com)Support: [tech@signalwayantibody.com](mailto:tech@signalwayantibody.com)

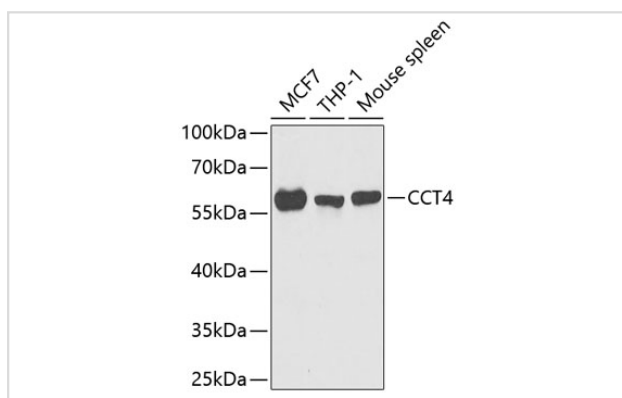
## Description

Product Name	ET-2 Antibody
Host Species	Rabbit
Clonality	Polyclonal
Isotype	IgG
Purification	Affinity purification
Applications	WB,IF
Species Reactivity	Human,Mouse,Rat
Specificity	The antibody detects endogenous levels of total ET-2 protein.
Immunogen Type	Recombinant Protein
Immunogen Description	Recombinant fusion protein of human CCT4 (NP_006421.2).
Target Name	ET-2
Other Names	CCT4;CCT-DELTA;Cctd;SRB
Accession No.	Uniprot:P50991GeneID:10575
SDS-PAGE MW	60kDa
Concentration	1mg/ml
Formulation	PBS with 0.02% sodium azide,50% glycerol,pH7.3.
Storage	Store at -20°C. Avoid freeze / thaw cycles.

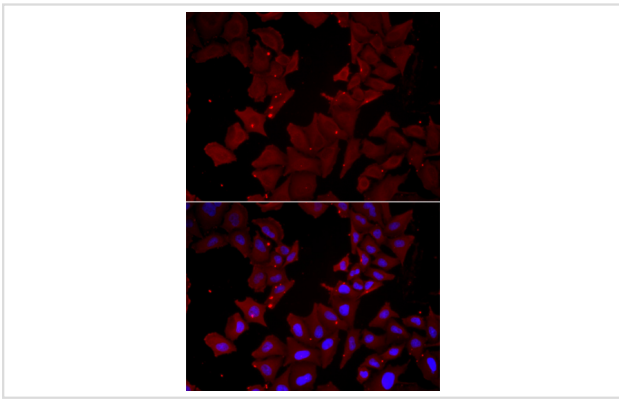
## Application Details

WB □ 1:500 - 1:2000 IF □ 1:50 - 1:200

## Images



Western blot analysis of extracts of various cell lines, using CCT4 antibody.



Immunofluorescence analysis of HeLa cells using CCT4 antibody.

## Background

The chaperonin containing TCP1 (MIM 186980) complex (CCT), also called the TCP1 ring complex, consists of 2 back-to-back rings, each containing 8 unique but homologous subunits, such as CCT4. CCT assists the folding of newly translated polypeptide substrates through multiple rounds of ATP-driven release and rebinding of partially folded intermediate forms. Substrates of CCT include the cytoskeletal proteins actin (see MIM 102560) and tubulin (see MIM 191130), as well as alpha-transducin (MIM 139330) (Won et al., 1998 [PubMed 9819444]).[supplied by OMIM, Mar 2008]

Note: This product is for in vitro research use only and is not intended for use in humans or animals.