

DNA Polymerase beta Antibody

Catalog No: #35404



Package Size: #35404-1 50ul #35404-2 100ul

Orders: order@signalwayantibody.comSupport: tech@signalwayantibody.com

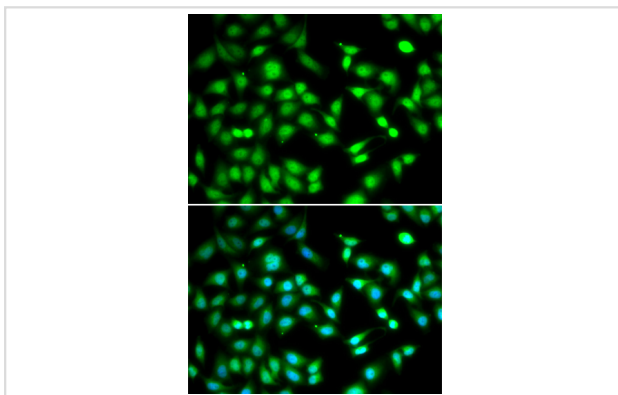
Description

Product Name	DNA Polymerase beta Antibody
Host Species	Rabbit
Clonality	Polyclonal
Purification	Antibodies were purified by antigen-affinity chromatography.
Applications	IF
Species Reactivity	Human
Specificity	The antibody detects endogenous levels of total DNA Polymerase beta protein.
Immunogen Type	Recombinant Protein
Immunogen Description	Recombinant fragment corresponding to a region within amino acids 1 and 330 of DNA Polymerase beta.
Target Name	DNA Polymerase beta
Other Names	MGC125976 antibody; POLB antibody; DNA pol beta antibody; DNA polymerase beta antibody; DNA polymerase beta subunit antibody; "polymerase (DNA directed); beta antibody"
Accession No.	Swiss-Prot#:P06746;NCBI Gene#:5423
SDS-PAGE MW	38kd
Concentration	1mg/ml
Formulation	Rabbit IgG in 1XPBS, 1%BSA, 20% Glycerol (pH7). 0.01% Thimerosal was added as a preservative.
Storage	Store at -20°C

Application Details

IF □ 1:50 - 1:100

Images



Immunofluorescence analysis of HeLa cells using CDKN2D antibody. Blue: DAPI for nuclear staining.

Background

In eukaryotic cells, DNA polymerase beta (POLB) performs base excision repair (BER) required for DNA maintenance, replication, recombination, and drug resistance. Also see POLA (MIM 312040).[supplied by OMIM]

Note: This product is for in vitro research use only and is not intended for use in humans or animals.