

PKN2 Antibody

Catalog No: #35490



Package Size: #35490-1 50ul #35490-2 100ul

Orders: order@signalwayantibody.com

Support: tech@signalwayantibody.com

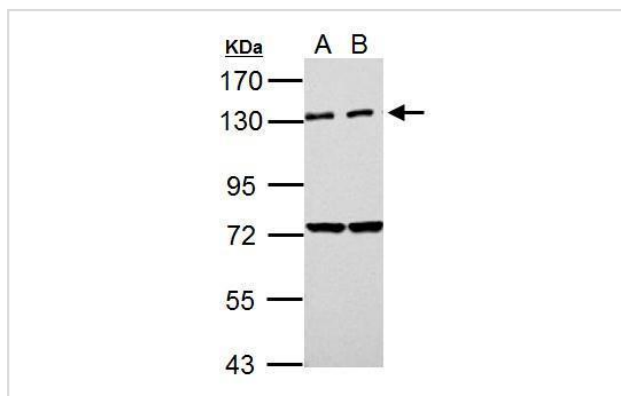
Description

Product Name	PKN2 Antibody
Host Species	Rabbit
Clonality	Polyclonal
Purification	Antibodies were purified by antigen-affinity chromatography.
Applications	WB
Species Reactivity	Hu
Specificity	The antibody detects endogenous levels of total PKN2 protein.
Immunogen Type	Recombinant Protein
Immunogen Description	Recombinant fragment contain a sequence corresponding to a region within amino acids 487 and 984 of PKN2.
Target Name	PKN2
Other Names	MGC150606 antibody; MGC71074 antibody; PAK2 antibody; PRK2 antibody; PRKCL2 antibody; PRO2042 antibody; Pak-2 antibody; PKN2 antibody; protein-kinase C-related kinase 2 antibody; cardiolipin-activated protein kinase Pak2 antibody; protein kinase C-like 2
Accession No.	Swiss-Prot#:Q16513 ;NCBI Gene#:5586
SDS-PAGE MW	112kd
Concentration	1mg/ml
Formulation	Rabbit IgG in 1XPBS, 20% Glycerol (pH7). 0.01% Thimerosal was added as a preservative.
Storage	Store at -20°C

Application Details

Western blotting: 1:500-1:3000

Images



Sample (30 ug of whole cell lysate)
 A: 293T
 B: A431
 7.5% SDS PAGE
 #35490 diluted at 1:1000

Background

PKN2 an AGC kinase of the PKN family. A PKC-related serine/threonine-protein kinase and Rho/Rac effector protein. Plays a role in the regulation of cell cycle progression, actin cytoskeleton assembly, cell migration, cell adhesion, tumor cell invasion and transcriptional activation. Phosphorylates CTTN in hyaluronan-induced astrocytes and hence decreases CTTN ability to associate with filamentous actin. Phosphorylates HDAC5, therefore lead to impair HDAC5 import. Direct RhoA target required for the regulation of the maturation of primordial junctions into apical junction formation in bronchial epithelial cells. Required for G2/M phases of the cell cycle progression and abscission during cytokinesis in an ECT2-dependent manner. Stimulates FYN kinase activity that is required for establishment of skin cell-cell adhesion during keratinocytes differentiation. Regulates epithelial bladder cells speed and direction of movement during cell migration and tumor cell invasion. Inhibits Akt pro-survival-induced kinase activity. Mediates Rho protein-induced transcriptional activation via the c-fos serum response factor (SRF). Phosphorylates HCV NS5B leading to stimulation of HCV RNA replication. Kinase activity is activated upon binding to GTP-bound RhoA/Rac1 GTPases. Activated by limited proteolysis with trypsin, and with caspase-3 (CASP3) during apoptosis. Activated by lipids, particularly cardiolipin and to a lesser extent by other acidic phospholipids and unsaturated fatty acids. Colocalizes with PTPN13 in lamellipodia-like structures, regions of large actin turnover. Accumulates during telophase at the cleavage furrow and concentrates finally around the midbody in cytokinesis. Recruited to nascent cell-cell contacts at the apical surface of cells. In the course of viral infection, colocalizes with HCV NS5B at perinuclear region in the cytoplasm. Five isoforms of the human protein are produced by alternative splicing.

Published Papers

el at., Upregulation of SNTB1 Correlates with Poor Prognosis and Promotes Cell Growth in Colorectal Cancer. In Cancer Cell Int on 2021 Oct 18 by Liya Liu, Youqin Chen, et al.. PMID: 34663329, , (2021)

[PMID:34663329](https://pubmed.ncbi.nlm.nih.gov/34663329/)

Note: This product is for in vitro research use only and is not intended for use in humans or animals.