

VPS16 antibody

Catalog No: #22032

Orders: order@signalwayantibody.com

Support: tech@signalwayantibody.com

Description

Product Name	VPS16 antibody
Host Species	Rabbit
Clonality	Polyclonal
Purification	Purified by antigen-affinity chromatography.
Applications	WB IHC
Species Reactivity	Hu
Immunogen Type	Peptide
Immunogen Description	Synthetic peptide contain a sequence corresponding to a region within amino acids 715 and 774 of human VPS16
Target Name	VPS16
Accession No.	NCBI Gene ID: 64601NCBI mRNA#: NM_022575NCBI Protein#: NP_072097
Concentration	0.8mg/ml
Formulation	Supplied in 0.1M Tris-buffered saline with 10% Glycerol (pH7.0). 0.01% Thimerosal was added as a preservative.
Storage	Store at -20°C for long term preservation (recommended). Store at 4°C for short term use.

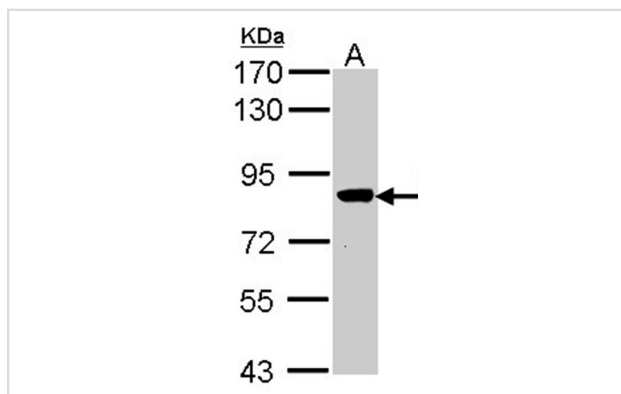
Application Details

Predicted MW: 95kd

Western blotting: 1:500-1:3000

Immunohistochemistry: 1:100-1:250

Images

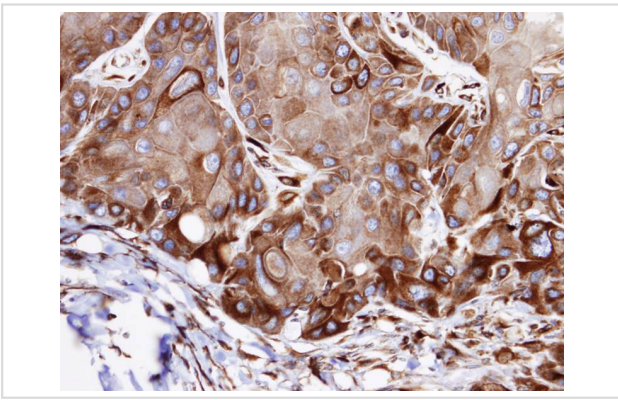


Sample (30 ug of whole cell lysate)

A: Molt-4

7.5% SDS PAGE

Primary antibody diluted at 1: 1000



Immunohistochemical analysis of paraffin-embedded SCC15 xenograft, using VPS16 antibody at 1: 100 dilution.

Background

Vesicle mediated protein sorting plays an important role in segregation of intracellular molecules into distinct organelles. Genetic studies in yeast have identified more than 40 vacuolar protein sorting (VPS) genes involved in vesicle transport to vacuoles. This gene encodes the human homolog of yeast class C Vps16 protein. The mammalian class C Vps proteins are predominantly associated with late endosomes/lysosomes, and like their yeast counterparts, may mediate vesicle trafficking steps in the endosome/lysosome pathway. [provided by RefSeq]

Note: This product is for in vitro research use only and is not intended for use in humans or animals.