

## CLCA4 Antibody

Catalog No: #35684



Package Size: #35684-1 50ul #35684-2 100ul

Orders: [order@signalwayantibody.com](mailto:order@signalwayantibody.com)Support: [tech@signalwayantibody.com](mailto:tech@signalwayantibody.com)

## Description

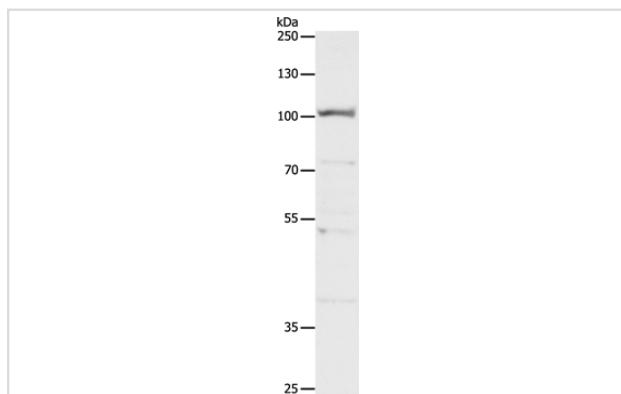
Product Name	CLCA4 Antibody
Host Species	Rabbit
Clonality	Polyclonal
Purification	Antigen affinity purification.
Applications	WB IHC
Species Reactivity	Hu
Specificity	The antibody detects endogenous levels of total CLCA4 protein.
Immunogen Type	Recombinant Protein
Immunogen Description	Fusion protein corresponding to a region derived from internal residues of human Calcium-activated chloride channel regulator 4
Target Name	CLCA4
Other Names	CaCC; CaCC2
Accession No.	Swiss-Prot#: Q14CN2NCBI Gene ID: 22802Gene Accssion: BC113689
SDS-PAGE MW	101kd
Concentration	0.4mg/ml
Formulation	Rabbit IgG in pH7.3 PBS, 0.05% NaN <sub>3</sub> , 50% Glycerol.
Storage	Store at -20°C

## Application Details

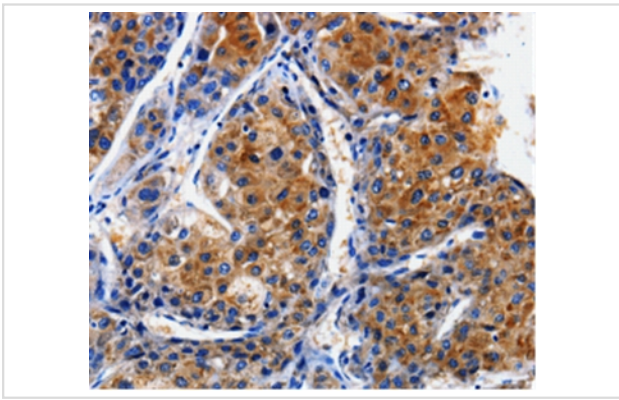
Western blotting: 1:100-1:500

Immunohistochemistry: 1:10-1:50

## Images



Gel: 8%SDS-PAGE  
 Lysate: 40ug 293T cell  
 Primary antibody: 1/200 dilution  
 Secondary antibody dilution: 1/8000  
 Exposure time: 30 seconds



Immunohistochemical analysis of paraffin-embedded Human liver cancer tissue using #35684 at dilution 1/10.

## Background

The protein encoded by this gene belongs to the calcium sensitive chloride conductance protein family. To date, all members of this gene family map to the same site on chromosome 1p31-p22 and share high degrees of homology in size, sequence and predicted structure, but differ significantly in their tissue distributions. Alternative splicing results in multiple transcript variants, only one of which is thought to be protein coding.

## Published Papers

el at., Downregulation of CLCA4 expression is associated with the development and progression of colorectal cancer. In *Oncol Lett* on 2020 Jul by Lihui Wei , Wujin Chen, et al..PMID: 32565987, , (2020)

[PMID:32565987](#)

Note: This product is for in vitro research use only and is not intended for use in humans or animals.