

ZWINT Antibody

Catalog No: #36183



Package Size: #36183-1 50ul #36183-2 100ul

Orders: order@signalwayantibody.comSupport: tech@signalwayantibody.com

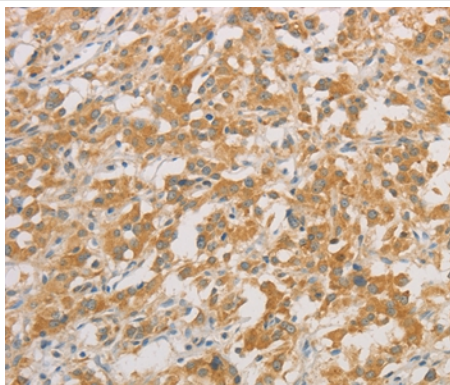
Description

| | |
|-----------------------|---|
| Product Name | ZWINT Antibody |
| Host Species | Rabbit |
| Clonality | Polyclonal |
| Purification | Antigen affinity purification. |
| Applications | IHC |
| Species Reactivity | Hu |
| Specificity | The antibody detects endogenous levels of total ZWINT protein. |
| Immunogen Type | Recombinant Protein |
| Immunogen Description | Full length fusion protein |
| Target Name | ZWINT |
| Other Names | ZWINT1; KNTC2AP; HZwint-1 |
| Accession No. | Swiss-Prot#: O95229NCBI Gene ID: 11130Gene Accssion: BC020979 |
| Concentration | 2mg/ml |
| Formulation | Rabbit IgG in pH7.3 PBS, 0.05% NaN ₃ , 50% Glycerol. |
| Storage | Store at -20°C |

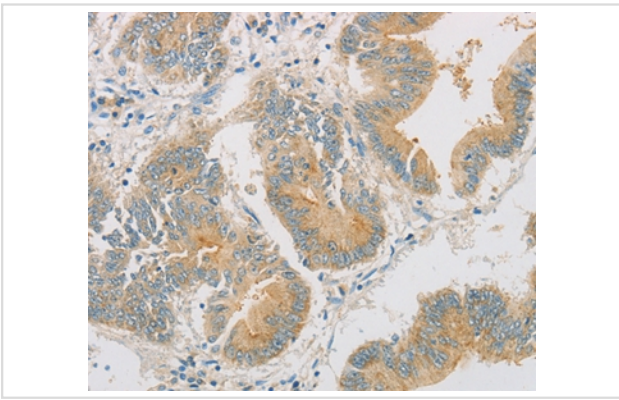
Application Details

Immunohistochemistry: 1:50-1:200

Images



Immunohistochemical analysis of paraffin-embedded Human thyroid cancer tissue using #36183 at dilution 1/50.



Immunohistochemical analysis of paraffin-embedded Human colon cancer tissue using #36183 at dilution 1/50.

Background

This gene encodes a protein that is clearly involved in kinetochore function although an exact role is not known. It interacts with ZW10, another kinetochore protein, possibly regulating the association between ZW10 and kinetochores. The encoded protein localizes to prophase kinetochores before ZW10 does and it remains detectable on the kinetochore until late anaphase. It has a uniform distribution in the cytoplasm of interphase cells. Alternatively spliced transcript variants encoding different isoforms have been found for this gene.?

Note: This product is for in vitro research use only and is not intended for use in humans or animals.