

XPO1 Antibody

Catalog No: #36228



Package Size: #36228-1 50ul #36228-2 100ul

Orders: order@signalwayantibody.com

Support: tech@signalwayantibody.com

Description

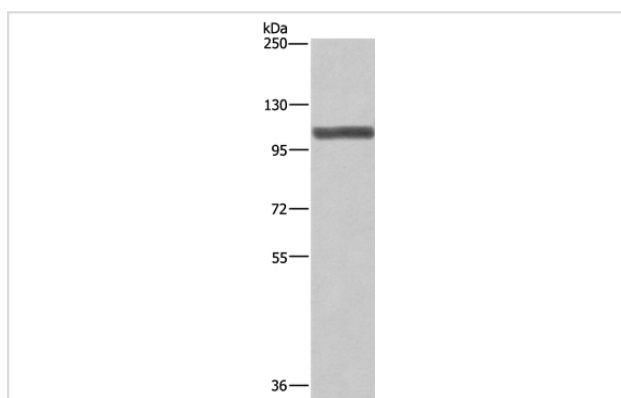
Product Name	XPO1 Antibody
Host Species	Rabbit
Clonality	Polyclonal
Purification	Antigen affinity purification.
Applications	WB IHC
Species Reactivity	Hu Ms
Specificity	The antibody detects endogenous levels of total XPO1 protein.
Immunogen Type	Recombinant Protein
Immunogen Description	Fusion protein corresponding to residues near the N terminal of human exportin 1 (CRM1 homolog, yeast)
Target Name	XPO1
Other Names	emb; CRM1; exp1
Accession No.	Swiss-Prot#: O14980NCBI Gene ID: 7514Gene Accssion: BC032847
SDS-PAGE MW	124kd
Concentration	1.1mg/ml
Formulation	Rabbit IgG in pH7.3 PBS, 0.05% NaN ₃ , 50% Glycerol.
Storage	Store at -20°C

Application Details

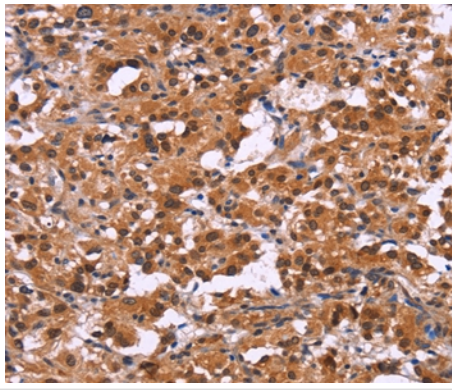
Western blotting: 1:200-1:1000

Immunohistochemistry: 1:25-1:100

Images



Gel: 6%SDS-PAGE
 Lysate: 40ug NIH/3T3 cell
 Primary antibody: 1/275 dilution
 Secondary antibody dilution: 1/8000
 Exposure time: 1 minute



Immunohistochemical analysis of paraffin-embedded Human thyroid cancer tissue using #36228 at dilution 1/25.

Background

The protein encoded by this gene mediates leucine-rich nuclear export signal (NES)-dependent protein transport. Exportin 1 specifically inhibits the nuclear export of Rev and U snRNAs. It is involved in the control of several cellular processes by controlling the localization of cyclin B, MPAK, and MAPKAP kinase 2. This protein also regulates NFAT and AP-1.?

Note: This product is for in vitro research use only and is not intended for use in humans or animals.