

KHK Antibody

Catalog No: #36230

Package Size: #36230-1 50ul #36230-2 100ul

Orders: order@signalwayantibody.com

Support: tech@signalwayantibody.com

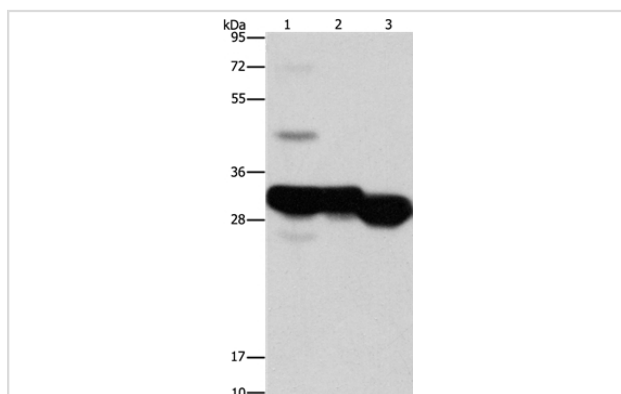
Description

Product Name	KHK Antibody
Host Species	Rabbit
Clonality	Polyclonal
Purification	Antigen affinity purification.
Applications	WB
Species Reactivity	Human;Mouse;Rat
Specificity	The antibody detects endogenous levels of total KHK protein.
Immunogen Type	Recombinant Protein
Immunogen Description	Full length fusion protein
Target Name	KHK
Other Names	Hepatic fructokinase;Ketoheokinase;ketoheokinase
Accession No.	Swiss-Prot#: P50053NCBI Gene ID: 3795Gene Accssion: BC006233
SDS-PAGE MW	33kd
Concentration	2.5mg/ml
Formulation	Rabbit IgG in pH7.3 PBS, 0.05% NaN ₃ , 50% Glycerol.
Storage	Store at -20°C

Application Details

Western blotting: 1:1000-1:5000

Images



Gel: 15%SDS-PAGE
 Lysates (from left to right): Mouse liver and kidney tissue,
 human fetal liver tissue
 Amount of lysate: 40ug per lane
 Primary antibody: 1/1250 dilution
 Secondary antibody dilution: 1/8000
 Exposure time: 3 seconds

Background

This gene encodes ketoheokinase that catalyzes conversion of fructose to fructose-1-phosphate. The product of this gene is the first enzyme with a specialized pathway that catabolizes dietary fructose. Alternatively spliced transcript variants encoding different isoforms have been identified.

Published Papers

el at., Ketohexokinase inhibition improves NASH by reducing fructose-induced steatosis and fibrogenesis. In JHEP Rep on 2020 Nov 20 by Emma L Shepherd, Raquel Saborano, et al..PMID:33490936, , (2021)

[PMID:33490936](#)

Note: This product is for in vitro research use only and is not intended for use in humans or animals.