

## ADCY3 Antibody

Catalog No: #36250

Package Size: #36250-1 50ul #36250-2 100ul

Orders: [order@signalwayantibody.com](mailto:order@signalwayantibody.com)Support: [tech@signalwayantibody.com](mailto:tech@signalwayantibody.com)

## Description

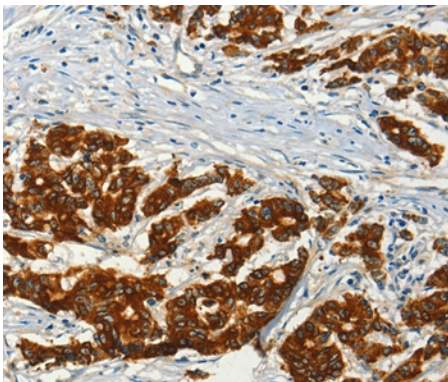
Product Name	ADCY3 Antibody
Host Species	Rabbit
Clonality	Polyclonal
Purification	Antigen affinity purification.
Applications	WB IHC
Species Reactivity	Hu, Ms, Rt
Specificity	The antibody detects endogenous levels of total ADCY3 protein.
Immunogen Type	Recombinant Protein
Immunogen Description	Recombinant fusion protein of human Adenylate Cyclase 3. The exact sequence is proprietary.
Target Name	ADCY3
Other Names	AC3
Accession No.	Swiss-Prot#: O60266NCBI Gene ID: 109Gene Accssion: BC126235
SDS-PAGE MW	129kd
Concentration	1mg/ml
Formulation	Liquid in 0.42% Potassium phosphate, 0.87% Sodium chloride, pH 7.3, 30% glycerol, and 0.01% sodium azide.
Storage	Store at -20°C

## Application Details

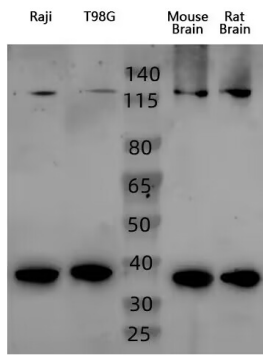
Western blotting: 1:200-1:1000

Immunohistochemistry: 1:50-1:200

## Images



Immunohistochemical analysis of paraffin-embedded Human colon cancer tissue using #36250 at dilution 1/50.



Gel: 6%SDS-PAGE Lysate: 40  $\mu$ g  
Primary antibody: ADCY3  
Antibody at dilution 1/1000  
Secondary antibody:  
HRP-conjugated Goat anti rabbit IgG at 1/5000 dilution  
Exposure time: 30 seconds

## Background

This gene encodes adenylyl cyclase 3 which is a membrane-associated enzyme and catalyzes the formation of the secondary messenger cyclic adenosine monophosphate (cAMP). This protein appears to be widely expressed in various human tissues and may be involved in a number of physiological and pathophysiological metabolic processes.

Note: This product is for in vitro research use only and is not intended for use in humans or animals.