

## AMY2A Antibody

Catalog No: #36258



Package Size: #36258-1 50ul #36258-2 100ul

Orders: order@signalwayantibody.com

Support: tech@signalwayantibody.com

## Description

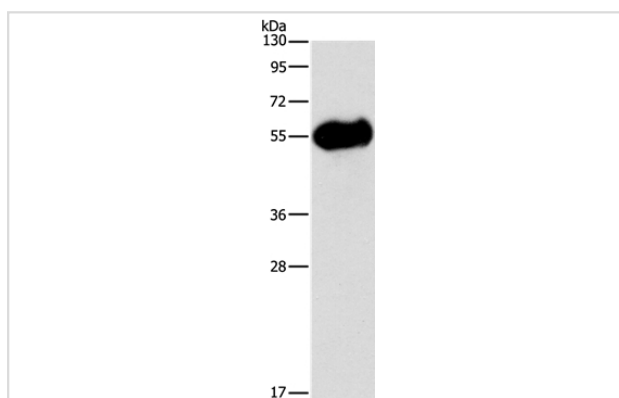
Product Name	AMY2A Antibody
Host Species	Rabbit
Clonality	Polyclonal
Purification	Antigen affinity purification.
Applications	WB,IHC,ELISA
Species Reactivity	Hu Ms
Specificity	The antibody detects endogenous levels of total AMY2A protein.
Immunogen Type	Recombinant Protein
Immunogen Description	Fusion protein corresponding to residues near the C terminal of human amylase, alpha 2A (pancreatic)
Target Name	AMY2A
Other Names	PA; AMY2; AMY2B
Accession No.	Swiss-Prot#: P04746NCBI Gene ID: 279Gene Accssion: BC007060
SDS-PAGE MW	58kd
Concentration	2.8mg/ml
Formulation	Rabbit IgG in pH7.3 PBS, 0.05% NaN <sub>3</sub> , 50% Glycerol.
Storage	Store at -20°C

## Application Details

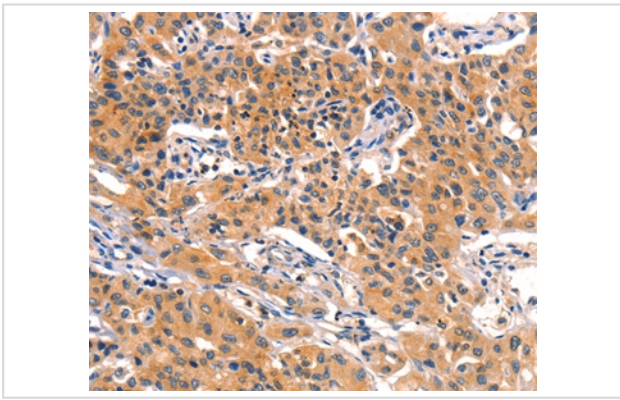
Western blotting: 1:1000-1:5000

Immunohistochemistry: 1:50-1:200

## Images



Gel: 15%SDS-PAGE  
 Lysates (from left to right): Mouse pancreas tissue  
 Amount of lysate: 40ug per lane  
 Primary antibody: 1/1400 dilution  
 Secondary antibody dilution: 1/8000  
 Exposure time: 1 second



Immunohistochemical analysis of paraffin-embedded Human lung cancer tissue using #36258 at dilution 1/50.

## Background

Amylases are secreted proteins that hydrolyze 1,4-alpha-glucoside bonds in oligosaccharides and polysaccharides, and thus catalyze the first step in digestion of dietary starch and glycogen. The human genome has a cluster of several amylase genes that are expressed at high levels in either salivary gland or pancreas. This gene encodes an amylase isoenzyme produced by the pancreas.

Note: This product is for in vitro research use only and is not intended for use in humans or animals.