

Fibulin-2 antibody

Catalog No: #22103

Orders: order@signalwayantibody.com

Support: tech@signalwayantibody.com

Description

Product Name	Fibulin-2 antibody
Host Species	Rabbit
Clonality	Polyclonal
Purification	Purified by antigen-affinity chromatography.
Applications	WB IHC
Species Reactivity	Hu
Immunogen Type	Recombinant protein
Immunogen Description	Recombinant protein fragment contain a sequence corresponding to a region within amino acids 20 and 283 of Human FBLN2
Target Name	Fibulin-2
Accession No.	NCBI Gene ID: 2199NCBI mRNA#: NM_001004019NCBI Protein#: NP_001004019
Concentration	1mg/ml
Formulation	Supplied in 0.1M Tris-buffered saline with 20% Glycerol (pH7.0). 0.01% Thimerosal was added as a preservative.
Storage	Store at -20°C for long term preservation (recommended). Store at 4°C for short term use.

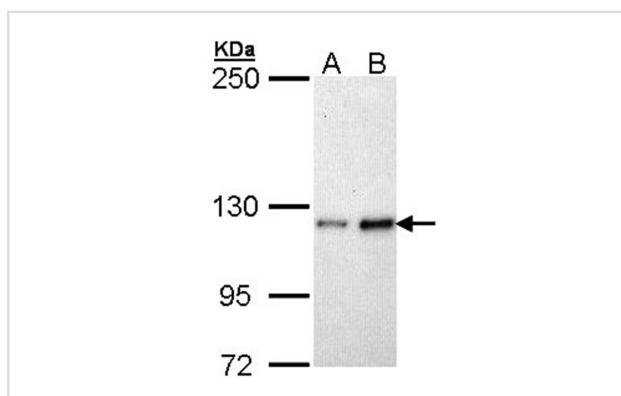
Application Details

Predicted MW: 132kd

Western blotting: 1:500-1:3000

Immunohistochemistry: 1:50-1:500

Images



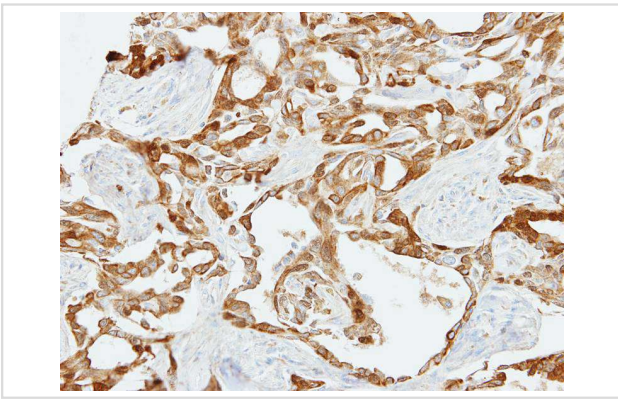
Sample (30 ug of whole cell lysate)

A: H1299

B: HeLa

5% SDS PAGE

Primary antibody diluted at 1: 1000



Immunohistochemical analysis of paraffin-embedded H661 xenograft, using Fibulin 2 antibody at 1: 500 dilution.

Background

This gene encodes an extracellular matrix protein, which belongs to the fibulin family. This protein binds various extracellular ligands and calcium. It may play a role during organ development, in particular, during the differentiation of heart, skeletal and neuronal structures. Alternatively spliced transcript variants encoding different isoforms have been identified. [provided by RefSeq]

Note: This product is for in vitro research use only and is not intended for use in humans or animals.