

PGCP antibody

Catalog No: #22111



Orders: order@signalwayantibody.com

Support: tech@signalwayantibody.com

Description

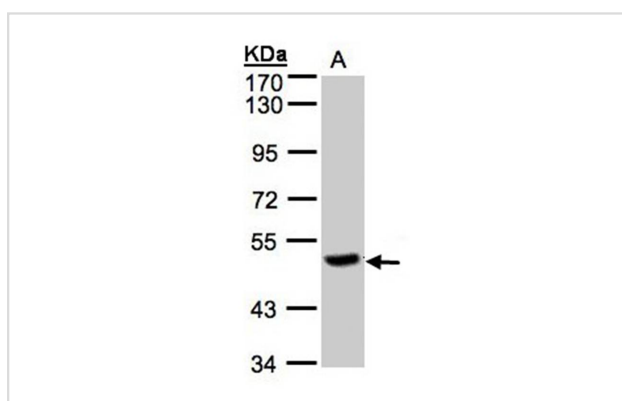
| | |
|-----------------------|---|
| Product Name | PGCP antibody |
| Host Species | Rabbit |
| Clonality | Polyclonal |
| Purification | Purified by antigen-affinity chromatography. |
| Applications | WB |
| Species Reactivity | Hu |
| Immunogen Type | Recombinant protein |
| Immunogen Description | Recombinant protein fragment contain a sequence corresponding to a region within amino acids 19 and 266 of Human PGCP |
| Target Name | PGCP |
| Accession No. | NCBI Gene ID: 10404NCBI mRNA#: NM_016134NCBI Protein#: NP_057218 |
| Concentration | 0.7mg/ml |
| Formulation | Supplied in 0.1M Tris-buffered saline with 10% Glycerol (pH7.0). 0.01% Thimerosal was added as a preservative. |
| Storage | Store at -20°C for long term preservation (recommended). Store at 4°C for short term use. |

Application Details

Predicted MW: 52kd

Western blotting: 1:500-1:3000

Images



Sample(30 ug of whole cell lysate)

A: Raji

7.5% SDS PAGE

Primary antibody diluted at 1: 500

Background

Carboxypeptidase that may play an important role in the hydrolysis of circulating peptides.

Note: This product is for in vitro research use only and is not intended for use in humans or animals.