

REL Antibody

Catalog No: #36369



Package Size: #36369-1 50ul #36369-2 100ul

Orders: order@signalwayantibody.comSupport: tech@signalwayantibody.com

Description

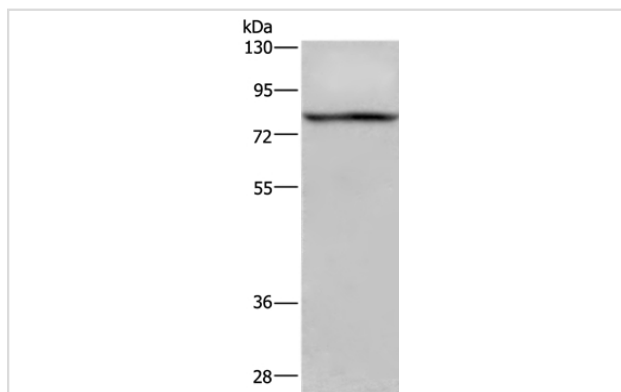
Product Name	REL Antibody
Host Species	Rabbit
Clonality	Polyclonal
Purification	Antigen affinity purification.
Applications	WB IHC
Species Reactivity	Hu
Specificity	The antibody detects endogenous levels of total REL protein.
Immunogen Type	Recombinant Protein
Immunogen Description	Fusion protein corresponding to residues near the C terminal of human v-rel avian reticuloendotheliosis viral oncogene homolog
Target Name	REL
Other Names	C-Rel
Accession No.	Swiss-Prot#: Q04864NCBI Gene ID: 5966Gene Accssion: NP_002899
SDS-PAGE MW	69kd
Concentration	1.3mg/ml
Formulation	Rabbit IgG in pH7.3 PBS, 0.05% NaN ₃ , 50% Glycerol.
Storage	Store at -20°C

Application Details

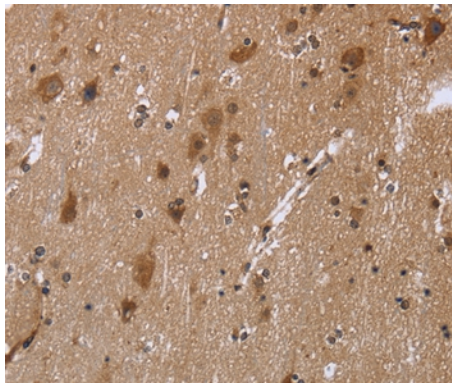
Western blotting: 1:500-1:2000

Immunohistochemistry: 1:50-1:200

Images



Gel: 6%SDS-PAGE
 Lysate: 40ug 293T cell
 Primary antibody: 1/950 dilution
 Secondary antibody dilution: 1/8000
 Exposure time: 10 seconds



Immunohistochemical analysis of paraffin-embedded Human brain tissue using #36369 at dilution 1/30.

Background

The REL gene encodes c-Rel, a transcription factor that is a member of the Rel/NF κ B family, which also includes RELA (MIM 164014), RELB (604758), NF κ B1 (MIM 164011), and NF κ B2 (MIM 164012). These proteins are related through a highly conserved N-terminal region termed the 'Rel domain,' which is responsible for DNA binding, dimerization, nuclear localization, and binding to the NF κ B inhibitor

Published Papers

el at., Intracellular AGR2 transduces PGE2 stimuli to promote epithelial ζ • esenchymal transition and metastasis of colorectal cancer. In Cancer Lett on 2021 Oct 10 by Hongyan

Zhang, Jiangyang Chi, et al..PMID:34216690, , (2021)

[PMID:34216690](#)

Note: This product is for in vitro research use only and is not intended for use in humans or animals.