

EPDR1 Antibody

Catalog No: #36444

Package Size: #36444-1 50ul #36444-2 100ul

Orders: order@signalwayantibody.com

Support: tech@signalwayantibody.com

Description

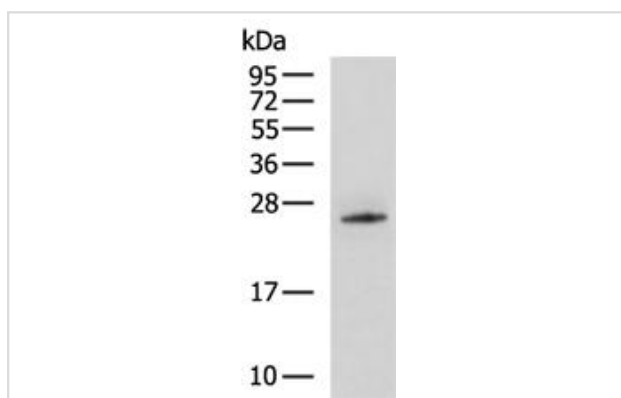
Product Name	EPDR1 Antibody
Host Species	Rabbit
Clonality	Polyclonal
Purification	Antigen affinity purification.
Applications	WB IHC
Species Reactivity	Hu Ms
Specificity	The antibody detects endogenous levels of total EPDR1 protein.
Immunogen Type	Recombinant Protein
Immunogen Description	Fusion protein corresponding to residues near the C terminal of human ependymin related 1
Target Name	EPDR1
Other Names	EPDR; UCC1; MERP1; MERP-1
Accession No.	Swiss-Prot#: Q9UM22NCBI Gene ID: 54749Gene Accssion: BC018299
SDS-PAGE MW	25kd
Concentration	0.8 mg/ml
Formulation	Rabbit IgG in pH7.3 PBS, 0.05% NaN ₃ , 50% Glycerol.
Storage	Store at -20°C

Application Details

Western blotting: 1:500-1:2000

Immunohistochemistry: 1:50-1:200

Images



Gel: 12%SDS-PAGE

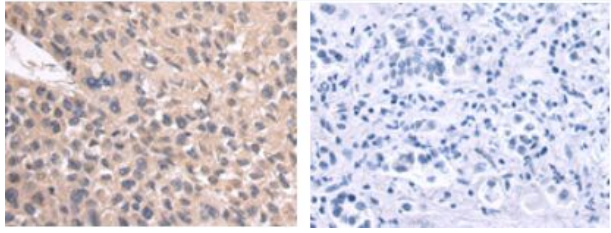
Lysate: 40 μ g

Lane: Mouse skeletal muscle tissue lysate

Primary antibody: EPDR1 Antibody at dilution 1/400

Secondary antibody: HRP-conjugated Goat anti rabbit IgG at 1/5000 dilution

Exposure time: 20 seconds



The image on the left is immunohistochemistry of paraffin-embedded Human liver cancer tissue using EPDR1 Antibody at dilution 1/55, on the right is treated with fusion protein. (Original magnification: $\times 200$)

Background

The protein encoded by this gene is a type II transmembrane protein that is similar to two families of cell adhesion molecules, the protocadherins and ependymins. This protein may play a role in calcium-dependent cell adhesion. This protein is glycosylated, and the orthologous mouse protein is localized to the lysosome. Alternative splicing results in multiple transcript variants. A related pseudogene has been identified on chromosome 8.

Note: This product is for in vitro research use only and is not intended for use in humans or animals.