

## FGL2 Antibody

Catalog No: #36481



Package Size: #36481-1 50ul #36481-2 100ul

Orders: order@signalwayantibody.com

Support: tech@signalwayantibody.com

## Description

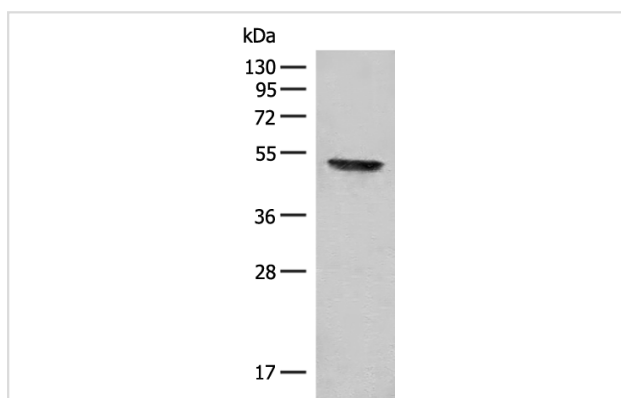
Product Name	FGL2 Antibody
Host Species	Rabbit
Clonality	Polyclonal
Purification	Antigen affinity purification.
Applications	WB,IHC,ELISA
Species Reactivity	Hu Ms
Specificity	The antibody detects endogenous levels of total FGL2 protein.
Immunogen Type	Recombinant Protein
Immunogen Description	Fusion protein corresponding to a region derived from internal residues of human fibrinogen-like 2
Target Name	FGL2
Other Names	T49; pT49
Accession No.	Swiss-Prot#: Q14314NCBI Gene ID: 10875Gene Accssion: BC033820
SDS-PAGE MW	50kd
Concentration	1.3mg/ml
Formulation	Rabbit IgG in pH7.3 PBS, 0.05% NaN <sub>3</sub> , 50% Glycerol.
Storage	Store at -20°C

## Application Details

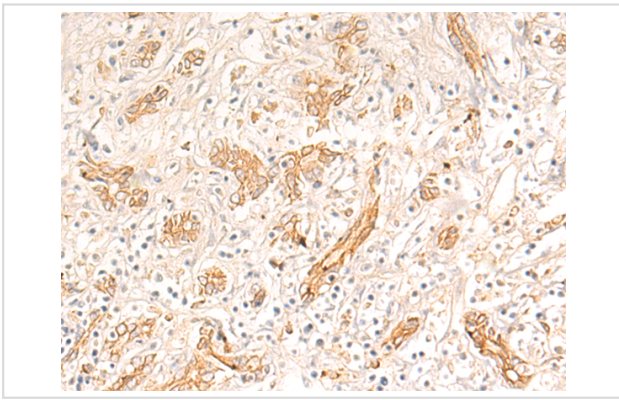
Western blotting: 1:500-1:2000

IHC dilution: 1:50-1:200

## Images



Gel: 8%SDS-PAGE Lysate: 40  $\mu$ g Lane: Mouse thymus tissue lysate Primary antibody: D122368(FGL2 Antibody) at dilution 1/300 Secondary antibody: Goat anti rabbit IgG at 1/8000 dilution Exposure time: 20 seconds



The image is immunohistochemistry of paraffin-embedded Human liver cancer tissue using FGL2 Antibody at dilution 1/50. (Original magnification:  $\times$  200)

## Background

The protein encoded by this gene is a secreted protein that is similar to the beta- and gamma-chains of fibrinogen. The carboxyl-terminus of the encoded protein consists of the fibrinogen-related domains (FRED). The encoded protein forms a tetrameric complex which is stabilized by interchain disulfide bonds. This protein may play a role in physiologic functions at mucosal sites.

Note: This product is for in vitro research use only and is not intended for use in humans or animals.