

SIRPB2 antibody

Catalog No: #22129

Orders: order@signalwayantibody.com

Support: tech@signalwayantibody.com

Description

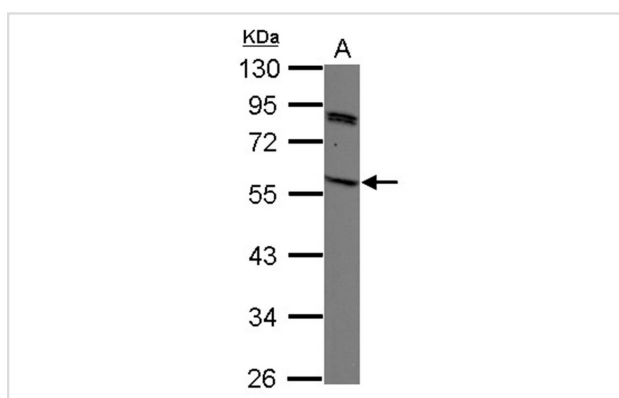
Product Name	SIRPB2 antibody
Host Species	Rabbit
Clonality	Polyclonal
Purification	Purified by antigen-affinity chromatography.
Applications	WB
Species Reactivity	Hu
Immunogen Type	Recombinant protein
Immunogen Description	Recombinant protein fragment contain a sequence corresponding to a region within amino acids 1 and 308 of Human SIRPG
Target Name	SIRPB2
Accession No.	NCBI Gene ID: 55423NCBI mRNA#: NM_018556NCBI Protein#: NP_061026
Concentration	0.9mg/ml
Formulation	Supplied in 0.1M Tris-buffered saline with 10% Glycerol (pH7.0). 0.01% Thimerosal was added as a preservative.
Storage	Store at -20°C for long term preservation (recommended). Store at 4°C for short term use.

Application Details

Predicted MW: 43kd

Western blotting: 1:500-1:3000

Images



Sample (30 ug of whole cell lysate)
A: K562
10% SDS PAGE
Primary antibody diluted at 1: 1000

Background

The protein encoded by this gene is a member of the signal-regulatory protein (SIRP) family, and also belongs to the immunoglobulin superfamily. SIRP family members are receptor-type transmembrane glycoproteins known to be involved in the negative regulation of receptor tyrosine kinase-coupled signaling processes. Alternatively spliced transcript variants encoding different isoforms have been described. [provided by RefSeq]

Note: This product is for in vitro research use only and is not intended for use in humans or animals.