

## NPEPPS antibody

Catalog No: #22131



Orders: order@signalwayantibody.com

Support: tech@signalwayantibody.com

## Description

Product Name	NPEPPS antibody
Host Species	Rabbit
Clonality	Polyclonal
Purification	Purified by antigen-affinity chromatography.
Applications	WB IF
Species Reactivity	Hu
Immunogen Type	Recombinant protein
Immunogen Description	Recombinant protein fragment contain a sequence corresponding to a region within amino acids 284 and 574 of NPEPPS
Target Name	NPEPPS
Accession No.	NCBI Gene ID: 9520NCBI mRNA#: BC065294NCBI Protein#: AAH65294
Concentration	0.4mg/ml
Formulation	Supplied in 0.1M Tris-buffered saline with 20% Glycerol (pH7.0). 0.01% Thimerosal was added as a preservative.
Storage	Store at -20°C for long term preservation (recommended). Store at 4°C for short term use.

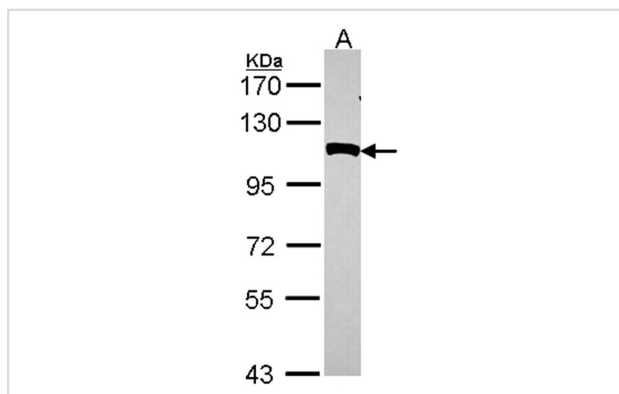
## Application Details

Predicted MW: 99kd

Western blotting: 1:500-1:3000

Immunofluorescence: 1:100-1:200

## Images



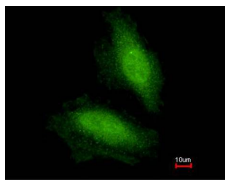
Sample (30 ug of whole cell lysate)

A: HeLa

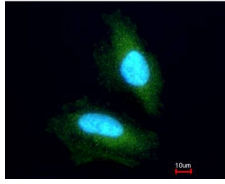
7.5% SDS PAGE

Primary antibody diluted at 1: 1000

Immunofluorescence analysis of paraformaldehyde-fixed HeLa, using NPEPPS antibody at 1: 200 dilution.



Costained with Hoechst 33342



## Background

This gene encodes the puromycin-sensitive aminopeptidase, a zinc metallopeptidase which hydrolyzes amino acids from the N-terminus of its substrate. The protein has been localized to both the cytoplasm and to cellular membranes. This enzyme degrades enkaphalins in the brain, and studies in mouse suggest that it is involved in proteolytic events regulating the cell cycle. [provided by RefSeq]

Note: This product is for in vitro research use only and is not intended for use in humans or animals.