

ZC3H12A Antibody

Catalog No: #36604



Package Size: #36604-1 50ul #36604-2 100ul

Orders: order@signalwayantibody.comSupport: tech@signalwayantibody.com

Description

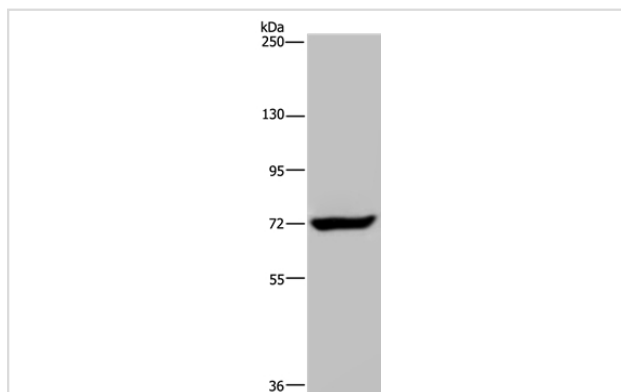
Product Name	ZC3H12A Antibody
Host Species	Rabbit
Clonality	Polyclonal
Purification	Antigen affinity purification.
Applications	WB IHC
Species Reactivity	Hu
Specificity	The antibody detects endogenous levels of total ZC3H12A protein.
Immunogen Type	Recombinant Protein
Immunogen Description	Fusion protein corresponding to a region derived from internal residues of human zinc finger CCCH-type containing 12A
Target Name	ZC3H12A
Other Names	MCPIP; MCPIP1; dJ423B22.1
Accession No.	Swiss-Prot#: Q5D1E8NCBI Gene ID: 80149Gene Accssion: BC005001
SDS-PAGE MW	66kd
Concentration	2mg/ml
Formulation	Rabbit IgG in pH7.3 PBS, 0.05% NaN ₃ , 50% Glycerol.
Storage	Store at -20°C

Application Details

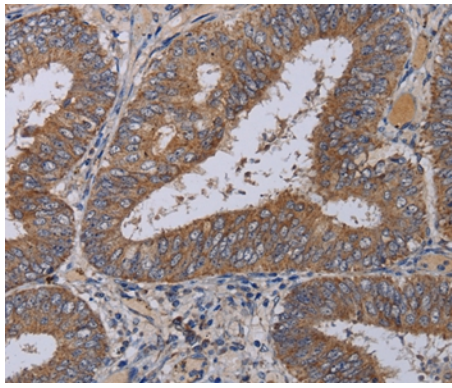
Western blotting: 1:500-1:2000

Immunohistochemistry: 1:50-1:200

Images



Gel: 6%SDS-PAGE
 Lysate: 40ug K562 cell
 Primary antibody: 1/200 dilution
 Secondary antibody dilution: 1/8000
 Exposure time: 20 seconds



Immunohistochemical analysis of paraffin-embedded Human colon cancer tissue using #36604 at dilution 1/40.

Background

ZC3H12A is an MCP1 (CCL2; MIM 158105)-induced protein that acts as a transcriptional activator and causes cell death of cardiomyocytes, possibly via induction of genes associated with apoptosis.

Note: This product is for in vitro research use only and is not intended for use in humans or animals.