

## MT-CO2 Antibody

Catalog No: #36717



Package Size: #36717-1 50ul #36717-2 100ul

Orders: [order@signalwayantibody.com](mailto:order@signalwayantibody.com)Support: [tech@signalwayantibody.com](mailto:tech@signalwayantibody.com)

## Description

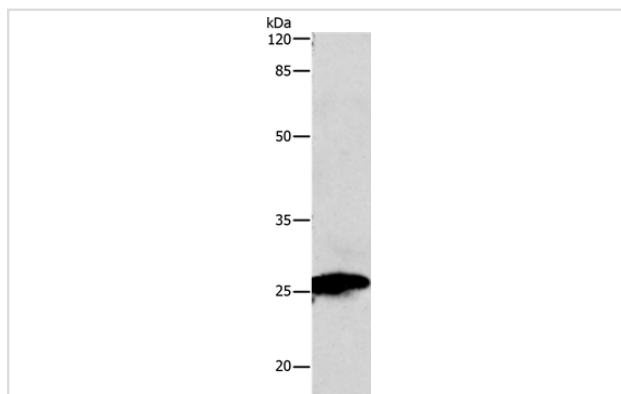
Product Name	MT-CO2 Antibody
Host Species	Rabbit
Clonality	Polyclonal
Purification	Antigen affinity purification.
Applications	WB,IHC,ELISA
Species Reactivity	Human
Specificity	The antibody detects endogenous levels of total MT-CO2 protein.
Immunogen Type	Peptide
Immunogen Description	Synthetic peptide corresponding to a region derived from internal residues of human mitochondrially encoded cytochrome c oxidase II
Target Name	MT-CO2
Other Names	COII; COXII; MTCO2
Accession No.	Swiss-Prot#: P00403 NCBI Gene ID: 4513Gene Accssion: YP_003024029
SDS-PAGE MW	26kd
Concentration	1mg/ml
Formulation	Rabbit IgG in pH7.3 PBS, 0.05% NaN3, 50% Glycerol.
Storage	Store at -20°C

## Application Details

Western blotting: 1:500-1:2000

Immunohistochemistry: 1:10-1:50

## Images



Gel: 10%SDS-PAGE

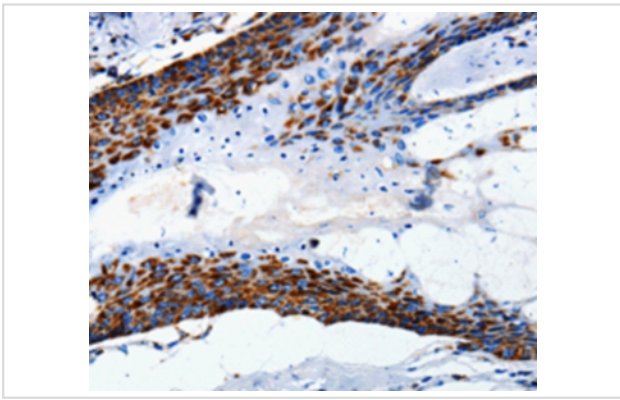
Lysates (from left to right): Mouse heart tissue

Amount of lysate: 30ug per lane

Primary antibody: 1/150 dilution

Secondary antibody dilution: 1/8000

Exposure time: 30 seconds



Immunohistochemical analysis of paraffin-embedded Human skin tissue using #36717 at dilution 1/5.

## Background

Cytochrome c oxidase is the component of the respiratory chain that catalyzes the reduction of oxygen to water. Subunits 1-3 form the functional core of the enzyme complex. Subunit 2 transfers the electrons from cytochrome c via its binuclear copper A center to the bimetallic center of the catalytic subunit 1.

Note: This product is for in vitro research use only and is not intended for use in humans or animals.