

Raf1(Phospho-Ser259) Antibody

Catalog No: #11006



Package Size: #11006-1 50ul #11006-2 100ul

Orders: order@signalwayantibody.comSupport: tech@signalwayantibody.com

Description

Product Name	Raf1(Phospho-Ser259) Antibody
Host Species	Rabbit
Clonality	Polyclonal
Purification	Antibodies were produced by immunizing rabbits with synthetic phosphopeptide and KLH conjugates. Antibodies were purified by affinity-chromatography using epitope-specific phosphopeptide. Non-phospho specific antibodies were removed by chromatography using non-phosphopeptide.
Applications	WB IHC
Species Reactivity	Human;Mouse;Rat
Specificity	The antibody detects endogenous level of Raf-1 only when phosphorylated at serine 259.
Immunogen Type	Peptide-KLH
Immunogen Description	Peptide sequence around phosphorylation site of serine 259 (S-T-S(p)-T-P) derived from Human Raf1.
Conjugates	Unconjugated
Target Name	Raf1
Modification	Phospho
Other Names	C-RAF; C-Raf; CRAF
Accession No.	Swiss-Prot: P04049NCBI Protein: NP_002871.1
Concentration	1.0mg/ml
Formulation	Supplied at 1.0mg/mL in phosphate buffered saline (without Mg ²⁺ and Ca ²⁺), pH 7.4, 150mM NaCl, 0.02% sodium azide and 50% glycerol.
Storage	Store at -20°C for long term preservation (recommended). Store at 4°C for short term use.

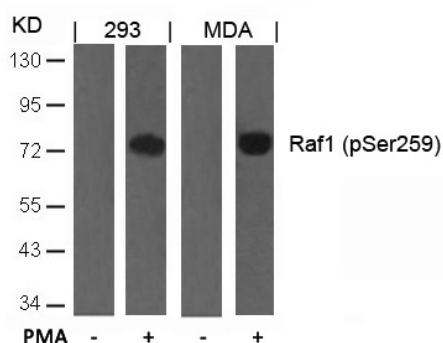
Application Details

Predicted MW: 73kd

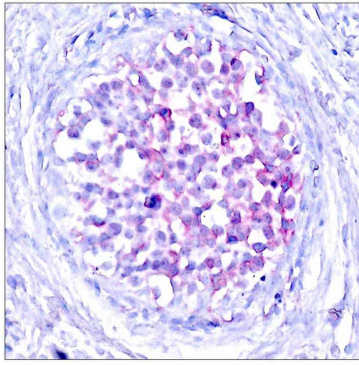
Western blotting: 1:500~1:1000

Immunohistochemistry: 1:50~1:100

Images



Western blot analysis of extracts from 293 and MDA cells untreated or treated with PMA using Raf1(Phospho-Ser259) Antibody #11006.



Immunohistochemical analysis of paraffin-embedded human breast carcinoma tissue using Raf1(Phospho-Ser259) Antibody #11006.

Background

Involved in the transduction of mitogenic signals from the cell membrane to the nucleus. Part of the Ras-dependent signaling pathway from receptors to the nucleus. Protects cells from apoptosis mediated by STK3.

Dougherty M K, et al. (2005) Mol Cell. 17(2): 215-224.

Hekman M, et al. (2005) FEBS Lett. 579(2): 464-468.

Avruch J, et al. (1994) Trends Biochem. Sci. 19, 279-283.

Chong H, et al. (2001) EMBO J. 20, 3716-3727.

King A J, et al. (1998) Nature. 396:180-183.

Published Papers

Zhi-Xin Qiu, Lei Wang, Juan Han et al., Prognostic impact of Raf-1 and p-Raf-1 expressions for poor survival rate in non-small cell lung cancer., Cancer Sci., 103(10):1774-1779(2012)

[PMID:22738312](#)

et al., Baicalin induces cellular senescence in human colon cancer cells via upregulation of DEPP and the activation of Ras/Raf/MEK/ERK signaling. In Cell Death Dis. On 2018 Feb 13 by Wang Z, Ma L et al.. PMID:29440765, , (2018)

[PMID:29440765](#)

et al., Prognostic Impact of Raf-1 and p-Raf-1 Expressions for Poor Survival Rate in Non-Small Cell Lung Cancer. In Cancer Sci on 2012 Oct by Zhi-Xin Qiu, Lei Wang, et al.. PMID:22738312, , (2012)

[PMID:22738312](#)

et al., Effect of Chaihusugan San on Expression of the Raf/mitogen-activated Protein Kinase/Extracellular Signal-Regulated Kinase Pathway in the Hippocampi of Perimenopausal Rats Induced by Immobilization Stress . In J Tradit Chin Med on 2015 Aug by Li Shengqiang, Liang Wenna et al.. PMID:26427116, , (2015)

[PMID:26427116](#)

et al., Exosomes Derived From Human Mesenchymal Stem Cells Confer Drug Resistance in Gastric Cancer. In Cell Cycle on 2015 Aug 3 by Runbi Ji , Bin Zhang et al.. PMID:26091251, , (2015)

[PMID:26091251](#)

et al., Mycoplasma ovipneumoniae induces sheep airway epithelial cell apoptosis through an ERK signalling-mediated mitochondria pathway. In BMC Microbiol on 2016 Sep 23 by Yanan Li, Zhongjia Jiang, et al.. PMID:27663303, , (2016)

[PMID:27663303](#)

et al., MicroRNA-146b, a sensitive indicator of mesenchymal stem cell repair of acute renal injury. In Stem Cells Transl Med on 2016 Oct by Yuan Zhu, Jing Yu, et al.. PMID: 27400799, , (2016)

[PMID:27400799](#)

Note: This product is for in vitro research use only and is not intended for use in humans or animals.