

Integrin b3(Phospho-Tyr773) Antibody

Catalog No: #11060

Package Size: #11060-1 50ul #11060-2 100ul

Orders: order@signalwayantibody.comSupport: tech@signalwayantibody.com

Description

Product Name	Integrin b3(Phospho-Tyr773) Antibody
Host Species	Rabbit
Clonality	Polyclonal
Isotype	IgG
Purification	Antibodies were produced by immunizing rabbits with synthetic phosphopeptide and KLH conjugates. Antibodies were purified by affinity-chromatography using epitope-specific phosphopeptide. Non-phospho specific antibodies were removed by chromatography using non-phosphopeptide.
Applications	WB IHC
Species Reactivity	Human;Mouse;Rat
Specificity	The antibody detects endogenous level of Integrin b3 only when phosphorylated at tyrosine 773.
Immunogen Type	Peptide-KLH
Immunogen Description	Peptide sequence around phosphorylation site of tyrosine 773 (P-L-Y(p)-K-E) derived from Human Integrin b3.
Conjugates	Unconjugated
Target Name	Integrin b3
Modification	Phospho
Other Names	CD61 antigen; GP3A; GPIIIa; ITB3; Platelet membrane glycoprotein IIIa
Accession No.	Swiss-Prot: P05106NCBI Protein: NP_000203.2
Concentration	1.0mg/ml
Formulation	Supplied at 1.0mg/mL in phosphate buffered saline (without Mg ²⁺ and Ca ²⁺), pH 7.4, 150mM NaCl, 0.02% sodium azide and 50% glycerol.
Storage	Store at -20°C for long term preservation (recommended). Store at 4°C for short term use.

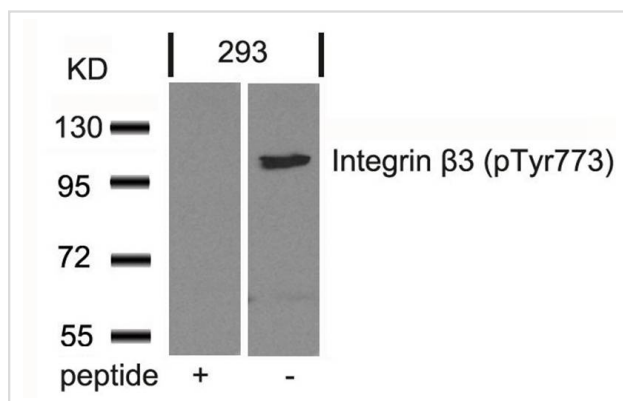
Application Details

Predicted MW: 110kd

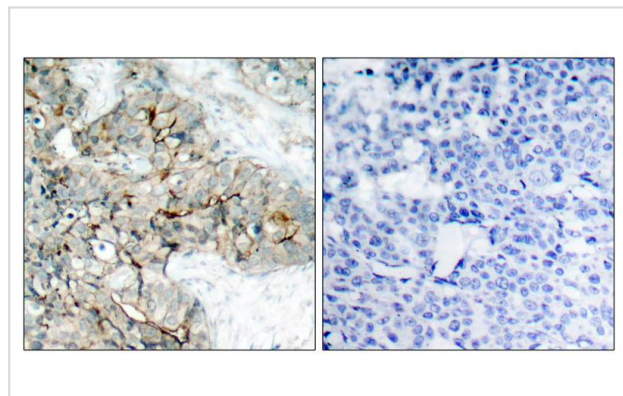
Western blotting: 1:500~1:1000

Immunohistochemistry: 1:50~1:100

Images



Western blot analysis of extracts from 293 cells using Integrin b3(Phospho-Tyr773) Antibody #11060 and the same antibody preincubated with blocking peptide.



Immunohistochemical analysis of paraffin-embedded human breast carcinoma tissue using Integrin b3(Phospho-Tyr773) Antibody #11060(left) or the same antibody preincubated with blocking peptide(right).

Background

Integrin α -V/ β -3 is a receptor for cytotactin, fibronectin, laminin, matrix metalloproteinase-2, osteopontin, osteomodulin, prothrombin, thrombospondin, vitronectin and von Willebrand factor. Integrin α -IIb/ β -3 is a receptor for fibronectin, fibrinogen, plasminogen, prothrombin, thrombospondin and vitronectin. Integrins α -IIb/ β -3 and α -V/ β -3 recognize the sequence R-G-D in a wide array of ligands. Integrin α -IIb/ β -3 recognizes the sequence H-H-L-G-G-A-K-Q-A-G-D-V in fibrinogen gamma chain. Following activation integrin α -IIb/ β -3 brings about platelet/platelet interaction through binding of soluble fibrinogen. This step leads to rapid platelet aggregation which physically plugs ruptured endothelial surface. In case of HIV-1 infection, the interaction with extracellular viral Tat protein seems to enhance angiogenesis in Kaposi's sarcoma lesions.

Chandhoke SK, et al. (2004) J Cell Sci.117 (Pt 8): 1431-1441.

Datta A, et al. (2002) J Biol Chem.277 (6): 3943-3949.

Law DA, et al. (1996) J Biol Chem.271 (18): 10811-10815.

Published Papers

Alessandra V. S. Faria;Sheila S. Andrade;Agnes N. Reijm;Manon C. W. Spaander;Moniek P. M. de Maat;Maikel P. Peppelenbosch;Carmen Ferreira-Halder;Gweny M. Fuhler et al., Targeting Tyrosine Phosphatases by 3-Bromopyruvate Overcomes Hyperactivation of Platelets from Gastrointestinal Cancer Patients, , (2019)

[PMID:31261776](#)

Note: This product is for in vitro research use only and is not intended for use in humans or animals.