

# HER2(Phospho-Tyr1248) Antibody

Catalog No: #11079

Package Size: #11079-1 50ul #11079-2 100ul

Orders: [order@signalwayantibody.com](mailto:order@signalwayantibody.com)Support: [tech@signalwayantibody.com](mailto:tech@signalwayantibody.com)

## Description

Product Name	HER2(Phospho-Tyr1248) Antibody
Host Species	Rabbit
Clonality	Polyclonal
Purification	Antibodies were produced by immunizing rabbits with synthetic phosphopeptide and KLH conjugates. Antibodies were purified by affinity-chromatography using epitope-specific phosphopeptide. Non-phospho specific antibodies were removed by chromatography using non-phosphopeptide.
Applications	WB IHC IF
Species Reactivity	Human;Mouse;Rat
Specificity	The antibody detects endogenous level of HER2 only when phosphorylated at tyrosine1248.
Immunogen Type	Peptide-KLH
Immunogen Description	Peptide sequence around phosphorylation site of tyrosine1248 (P-E-Y(p)-L-G) derived from Human HER2.
Conjugates	Unconjugated
Target Name	HER2
Modification	Phospho
Other Names	C-erbB-2; ErbB2;
Accession No.	Swiss-Prot: P04626NCBI Protein: NP_001005862.1
Concentration	1.0mg/ml
Formulation	Supplied at 1.0mg/mL in phosphate buffered saline (without Mg <sup>2+</sup> and Ca <sup>2+</sup> ), pH 7.4, 150mM NaCl, 0.02% sodium azide and 50% glycerol.
Storage	Store at -20°C for long term preservation (recommended). Store at 4°C for short term use.

## Application Details

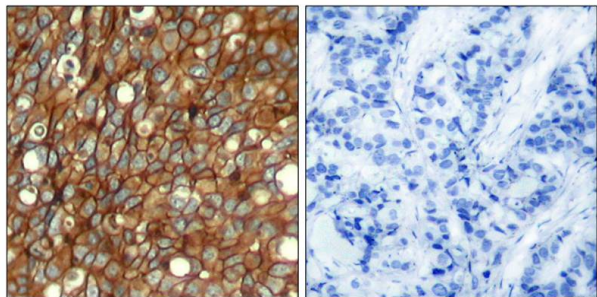
Predicted MW: 185kd

Western blotting: 1:500~1:1000

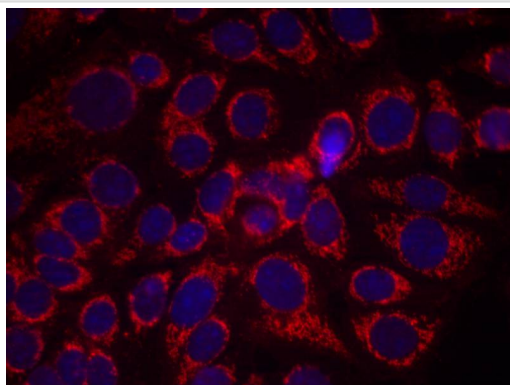
Immunohistochemistry: 1:50~1:100

Immunofluorescence: 1:100~1:200

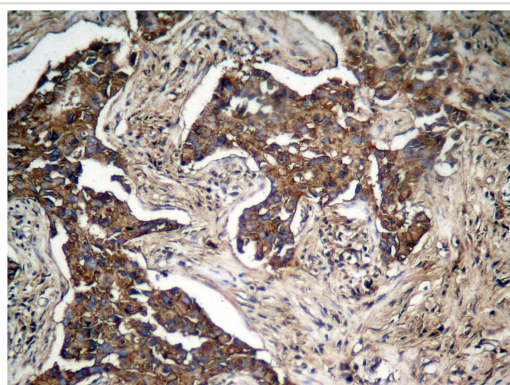
## Images



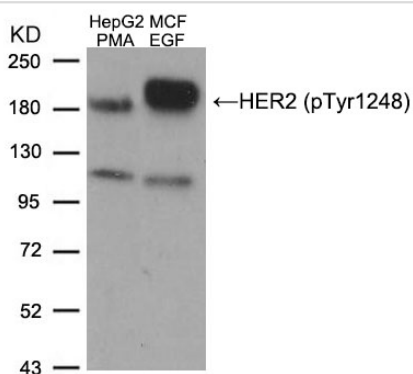
Immunohistochemical analysis of paraffin-embedded human breast carcinoma tissue using HER2 (Phospho-Tyr1248) Antibody #11079 (left) or the same antibody preincubated with blocking peptide #51079 (right).



Immunofluorescence staining of methanol-fixed MCF7 cells using HER2(Phospho-Tyr1248) Antibody #11079.



Immunohistochemical analysis of paraffin-embedded human lung carcinoma tissue, using HER2 (Phospho-Tyr1248) Antibody #11079.



Western blot analysis of extracts from HepG2 cells treated with PMA and MCF cells treated with EGF, using HER2 (Phospho-Tyr1248) Antibody #11079.

## Background

Essential component of a neuregulin-receptor complex, although neuregulins do not interact with it alone. GP30 is a potential ligand for this receptor. Not activated by EGF, TGF- $\alpha$  and amphiregulin.

Yuan, Lu Qian, Ming Shi, et al. (2008) HER2-dependent MMP-7 expression is mediated by activated STAT3 Guogang Cellular Signalling, 20:1284

## Published Papers

Yuan Guogang, Lu Qian, Ming Shi et al., HER2-dependent MMP-7 expression is mediated by activated STAT3., Cellular Signalling, 20(7):1284-1291 (2008)

[PMID:18411043](#)

---

et al., HER2-dependent MMP-7 Expression Is Mediated by Activated STAT3. In Cell Signal on 2008 Jul by Guogang Yuan, Lu Qian, et al.. PMID:18411043, (2008)

[PMID:18411043](#)

---

---

Note: This product is for in vitro research use only and is not intended for use in humans or animals.