

cdc25C(Phospho-Ser216) Antibody

Catalog No: #11118

Package Size: #11118-1 50ul #11118-2 100ul

Orders: order@signalwayantibody.comSupport: tech@signalwayantibody.com

Description

Product Name	cdc25C(Phospho-Ser216) Antibody
Host Species	Rabbit
Clonality	Polyclonal
Purification	Antibodies were produced by immunizing rabbits with synthetic phosphopeptide and KLH conjugates. Antibodies were purified by affinity-chromatography using epitope-specific phosphopeptide. Non-phospho specific antibodies were removed by chromatography using non-phosphopeptide.
Applications	WB IHC IF
Species Reactivity	Hu
Specificity	The antibody detects endogenous level of cdc25C only when phosphorylated at serine 216.
Immunogen Type	Peptide-KLH
Immunogen Description	Peptide sequence around phosphorylation site of serine 216 (S-P-S(p)-M-P) derived from Human cdc25C.
Target Name	cdc25C
Modification	Phospho
Other Names	CDC25M1; MPIP3;
Accession No.	Swiss-Prot: P30307NCBI Protein: NP_001781.2
Concentration	1.0mg/ml
Formulation	Supplied at 1.0mg/mL in phosphate buffered saline (without Mg ²⁺ and Ca ²⁺), pH 7.4, 150mM NaCl, 0.02% sodium azide and 50% glycerol.
Storage	Store at -20°C for long term preservation (recommended). Store at 4°C for short term use.

Application Details

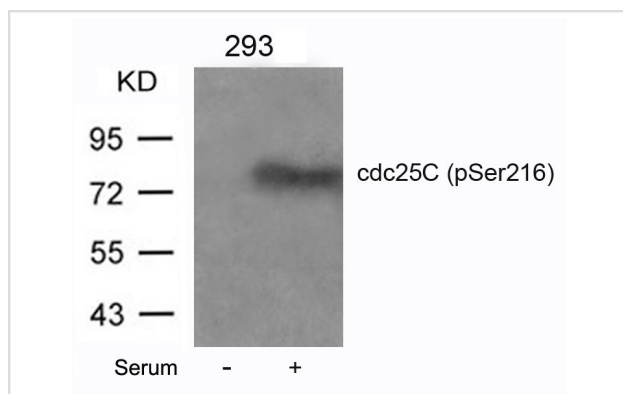
Predicted MW: 60 80kd

Western blotting: 1:500~1:1000

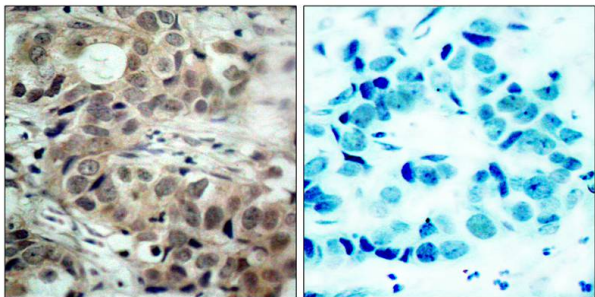
Immunohistochemistry: 1:50~1:100

Immunofluorescence: 1:100~1:200

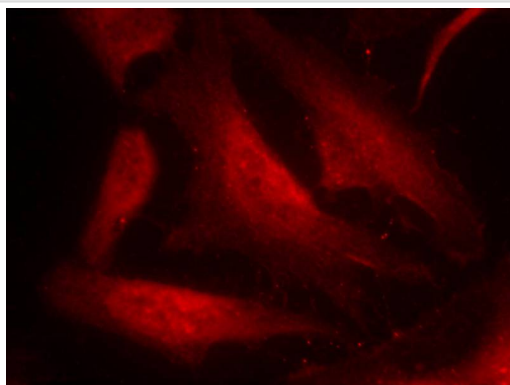
Images



Western blot analysis of extracts from 293 cells untreated or treated with serum using cdc25C(Phospho-Ser216) Antibody #11118.



Immunohistochemical analysis of paraffin-embedded human breast carcinoma tissue using cdc25C(Phospho-Ser216) Antibody #11118(left) or the same antibody preincubated with blocking peptide(right).



Immunofluorescence staining of methanol-fixed HeLa cells using cdc25C(Phospho-Ser216) Antibody #11118.

Background

cdc25C is highly conserved during evolution and it plays a key role in the regulation of cell division. The encoded protein is a tyrosine phosphatase and belongs to the Cdc25 phosphatase family. It directs dephosphorylation of cyclin B-bound CDC2 and triggers entry into mitosis. It is also thought to suppress p53-induced growth arrest. Multiple alternatively spliced transcript variants of this gene have been described, however, the full-length nature of many of them is not known.

Toyoshima-Morimoto F. et al. (2002) EMBO Rep. 3(4): 341-348.

Ferguson AM. et al. (2005) Mol Cell Biol. 25(7): 2853-2860.

Donzelli M. et al. (2003) EMBO Rep. 4(7): 671-677.

Chen F. et al. (2002) Proc Natl Acad Sci U S A. 99(4): 1990-1995.

Published Papers

el at., Jaridonin-induced G2/M Phase Arrest in Human Esophageal Cancer Cells Is Caused by Reactive Oxygen Species-Dependent Cdc2-tyr15 Phosphorylation via ATM-Chk1/2-Cdc25C Pathway .In Toxicol Appl Pharmacol on 2015 Jan 15 by Yong-Cheng Ma , Nan Su et al..PMID:25450480 , (2015)

[PMID:25450480](#)

el at., PFKFB3 blockade inhibits hepatocellular carcinoma growth by impairing DNA repair through AKT. In Cell Death Dis on 2018 Apr 1 by Wen-Kai Shi, Xiao-Dong Zhu, et al..PMID: 29559632 , , (2018)

[PMID:29559632](#)

Note: This product is for in vitro research use only and is not intended for use in humans or animals.