

Stathmin1(Phospho-Ser25) Antibody

Catalog No: #11224



Package Size: #11224-1 50ul #11224-2 100ul

Orders: order@signalwayantibody.comSupport: tech@signalwayantibody.com

Description

Product Name	Stathmin1(Phospho-Ser25) Antibody
Host Species	Rabbit
Clonality	Polyclonal
Purification	Antibodies were produced by immunizing rabbits with synthetic phosphopeptide and KLH conjugates. Antibodies were purified by affinity-chromatography using epitope-specific phosphopeptide. Non-phospho specific antibodies were removed by chromatography using non-phosphopeptide.
Applications	WB IHC
Species Reactivity	Human;Mouse;Rat
Specificity	The antibody detects endogenous level of Stathmin 1 only when phosphorylated at serine 25.
Immunogen Type	Peptide-KLH
Immunogen Description	Peptide sequence around phosphorylation site of serine 25 (I-L-S(p)-P-R) derived from Human Stathmin 1.
Conjugates	Unconjugated
Target Name	Stathmin1
Modification	Phospho
Other Names	STMN1; STN1; stathmin
Accession No.	Swiss-Prot: P16949NCBI Protein: NP_001138926.1
Concentration	1.0mg/ml
Formulation	Supplied at 1.0mg/mL in phosphate buffered saline (without Mg ²⁺ and Ca ²⁺), pH 7.4, 150mM NaCl, 0.02% sodium azide and 50% glycerol.
Storage	Store at -20°C for long term preservation (recommended). Store at 4°C for short term use.

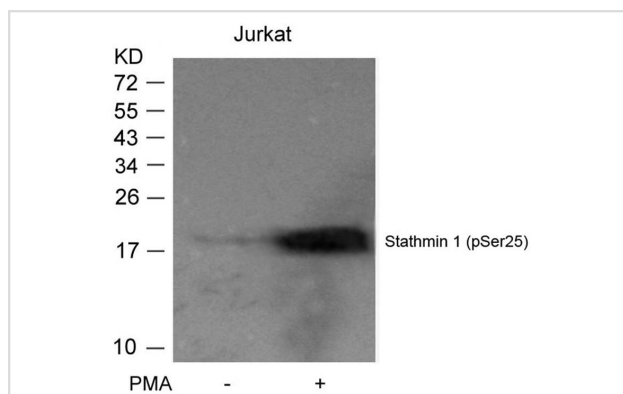
Application Details

Predicted MW: 19kd

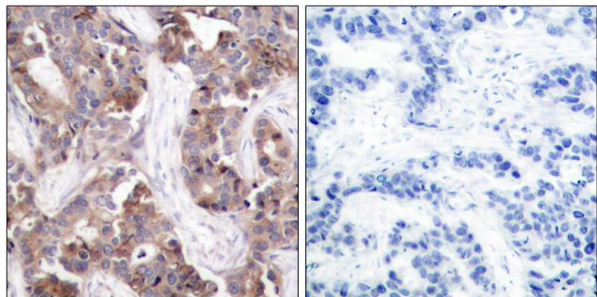
Western blotting: 1:500~1:1000

Immunohistochemistry: 1:50~1:100

Images



Western blot analysis of extracts from Jurkat cells untreated or treated with PMA using Stathmin 1(Phospho-Ser25) Antibody #11224.



Immunohistochemical analysis of paraffin-embedded human breast carcinoma tissue using Stathmin 1(Phospho-Ser25) Antibody #11224(left) or the same antibody preincubated with blocking peptide(right).

Background

Involved in the regulation of the microtubule (MT) filament system by destabilizing microtubules. Prevents assembly and promotes disassembly of microtubules. Phosphorylation at Ser-16 may be required for axon formation during neurogenesis. Involved in the control of the learned and innate fear

Boehm M, et al. (2002) EMBO J 21(13): 3390-3401.

Vadlamudi RK, et al. (2005) Mol Cell Biol 25(9): 3726-3736.

Zilfou JT, et al. (2001) Mol Cell Biol 21(12): 3974-3985.

Biernat J, et al. (2002) Mol Biol Cell 13(11): 4013-4028.

Note: This product is for in vitro research use only and is not intended for use in humans or animals.