

# P38 MAPK(Phospho-Tyr182) Antibody

Catalog No: #11253

Package Size: #11253-1 50ul #11253-2 100ul

Orders: [order@signalwayantibody.com](mailto:order@signalwayantibody.com)Support: [tech@signalwayantibody.com](mailto:tech@signalwayantibody.com)

## Description

Product Name	P38 MAPK(Phospho-Tyr182) Antibody
Host Species	Rabbit
Clonality	Polyclonal
Purification	Antibodies were produced by immunizing rabbits with synthetic phosphopeptide and KLH conjugates. Antibodies were purified by affinity-chromatography using epitope-specific phosphopeptide. Non-phospho specific antibodies were removed by chromatography using non-phosphopeptide.
Applications	WB IHC
Species Reactivity	Human;Mouse;Rat
Specificity	The antibody detects endogenous level of P38MAPK only when phosphorylated at tyrosine 182.
Immunogen Type	Peptide-KLH
Immunogen Description	Peptide sequence around phosphorylation site of tyrosine 182 (T-G-Y(p)-V-A) derived from Human P38 MAPK.
Conjugates	Unconjugated
Target Name	P38 MAPK
Modification	Phospho
Other Names	MAPK2; MAPKAPK-2; MAPKAPK2
Accession No.	Swiss-Prot: Q16539NCBI Protein: NP_001306.1
Concentration	1.0mg/ml
Formulation	Supplied at 1.0mg/mL in phosphate buffered saline (without Mg <sup>2+</sup> and Ca <sup>2+</sup> ), pH 7.4, 150mM NaCl, 0.02% sodium azide and 50% glycerol.
Storage	Store at -20°C for long term preservation (recommended). Store at 4°C for short term use.

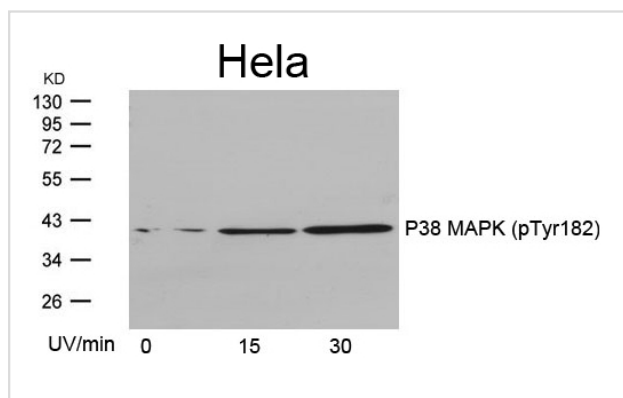
## Application Details

Predicted MW: 43kd

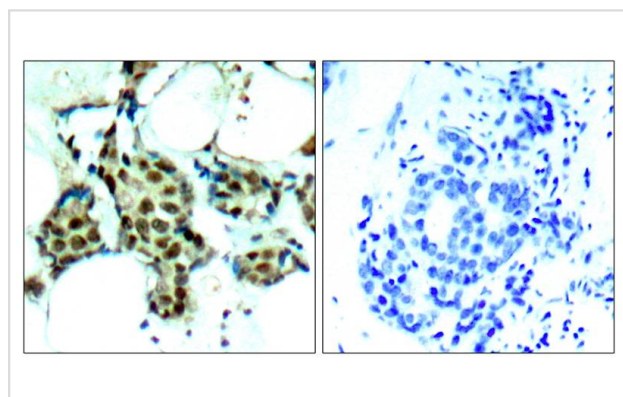
Western blotting: 1:500~1:1000

Immunohistochemistry: 1:50~1:100

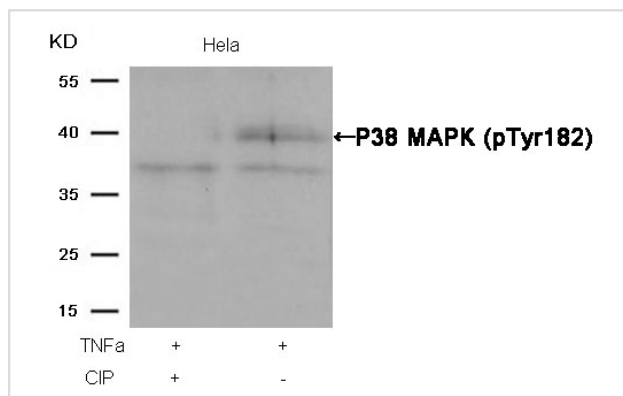
## Images



Western blot analysis of extracts from HeLa cells untreated or treated with UV for the indicated times, using P38 MAPK(Phospho-Tyr182) Antibody #11253.



Immunohistochemical analysis of paraffin-embedded human breast carcinoma tissue using P38 MAPK(Phospho-Tyr182) Antibody #11253(left) or the same antibody preincubated with blocking peptide(right).



Western blot analysis of extracts from HeLa cells, treated with TNFα or calf intestinal phosphatase (CIP), using P38 MAPK (Phospho-Tyr182) Antibody #11253.

## Background

Responds to activation by environmental stress, pro-inflammatory cytokines and lipopolysaccharide (LPS) by phosphorylating a number of transcription factors, such as ELK1 and ATF2 and several downstream kinases, such as MAPKAPK2 and MAPKAPK5. Plays a critical role in the production of some cytokines, for example IL-6. May play a role in stabilization of EPO mRNA during hypoxic stress. Isoform Mxi2 activation is stimulated by mitogens and oxidative stress and only poorly phosphorylates ELK1 and ATF2. Isoform Exip may play a role in the early onset of apoptosis.

Ming Zheng, et al.(2005) The FASEB Journal. 19: 109-111

Bernt van den et al.(2001) Blink Immunology, 166: 582-587

Arshad Rahman, et al. (2004) Am J Physiol Lung Cell Mol Physiol 287: L1017-L1024

Osamu Yoshino, et al. (2003) Endocrinology & Metabolism Vol. 88: 2236-2241

## Published Papers

RS Chen, YM Song et al., Disruption of xCT inhibits cancer cell metastasis via the caveolin-1/ε<sup>+</sup> θ -catenin pathway., Oncogene, 28, 599η— C609(2008)

PMID:19015640

et al., Siliblnln A decreases statln?Induced PCSK9 expression In human hepatoblastoma HepG2 cells. In Mol Med Rep on 2019 Aug by Dong Z,

Zhang W,et al..PMID:31173243, , (2019)

[PMID:31173243](#)

---

el at., Amiloride alleviates morphine tolerance by suppressing ASIC3-dependent neuroinflammation in the spinal cord. In Eur J Pharmacol  
on 2024 Jan 15 by Liba Gei, Yan Yan,et al..PMID:37918499, , (2024)

[PMID:37918499](#)

---

Jing Guan;Xin Tong;Yi Zhang;Fan Xu;Yuxin Zhang;Xiurui Liang;Jiaqi Jin;Hongyan Jing;Liuxian Guo;Xinrui Ni;Jihua Fu el at., Nephrotoxicity induced by  
cisplatin is primarily due to the activation of the 5-hydroxytryptamine degradation system in proximal renal tubules, , (2021)

[PMID:](#)

---

---

Note: This product is for in vitro research use only and is not intended for use in humans or animals.